

STERN

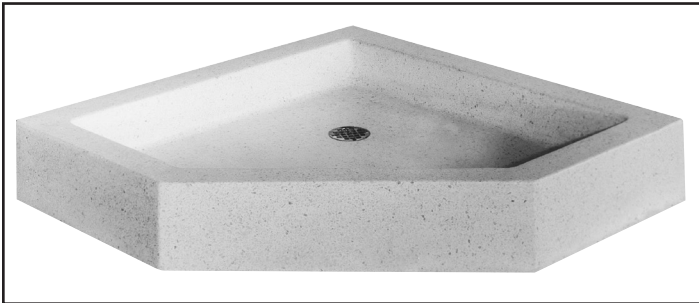
WILLIAMS

SERPENTINE

SHOWER FLOORS

**ARCHITECTURAL
SPECIFICATIONS**

Shower Floor shall be of Williams precast terrazzo. Terrazzo shall be made of black and white marble chips cast in white portland cement to produce a compressive strength of not less than 3000 PSI, seven days after casting. Terrazzo surface shall be ground smooth, grouted and sealed to resist stain. Flange, cast integral shall be of galvanized bonderized steel and shall extend not less than one inch above the shoulder, Shoulder shall be not less than three inches wide. Drain body shall be cast integral, and shall provide for a caulked lead connection not less than one inch deep to a two inch pipe. Removable type strainer plate shall be made of stainless steel.



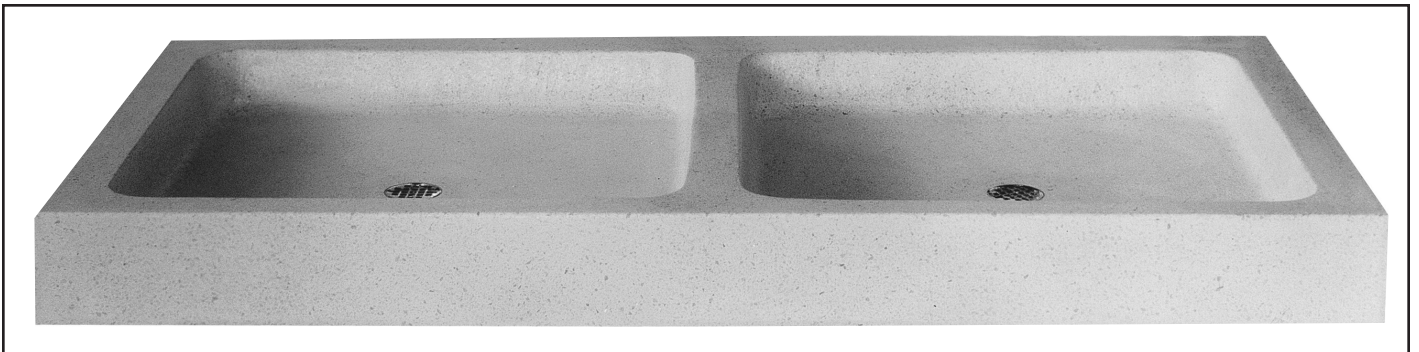
**NEO CORNER, PLAIN CURBS,
FLANGED AND/OR RABBETED**

MODEL	SIZE
34-NC	36" x 36" x 6"



**SERPENTINE WITH SINGLE DRAIN, PLAIN CURBS,
FLANGED AND/OR RABBETED**

MODEL	SIZE
34	36" x 36" x 6"
34.5	48" x 36" x 6"
36-D	36" x 72" x 6"



**SERPENTINE WITH SINGLE DRAIN, PLAIN CURBS,
FLANGED AND/OR RABBETED**

MODEL	SIZE
36-DD	36" x 72" x 6"

JOB

ENGINEER

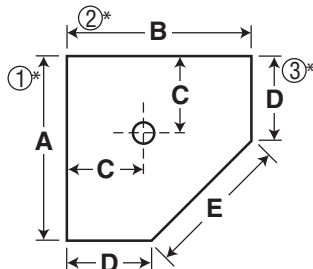
LOCATION

CONTRACTOR

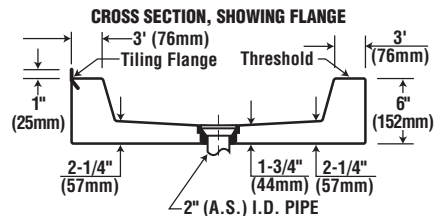
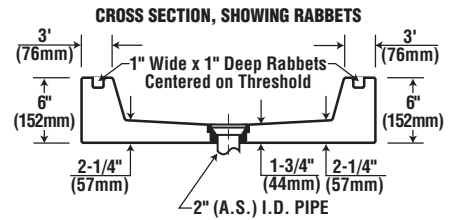
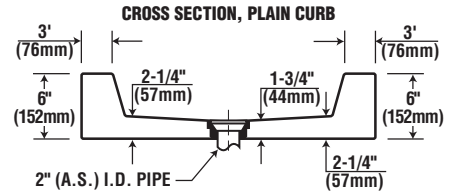
Serpentine SHOWER FLOORS

Available with plain curb, flanges (specify number of and location), and or rabbets. (Provide sketch)

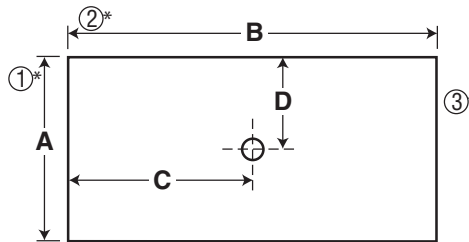
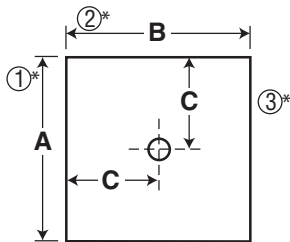
Indicate no. of Rabbeted sides*
 one two three four
 (Provide sketch)



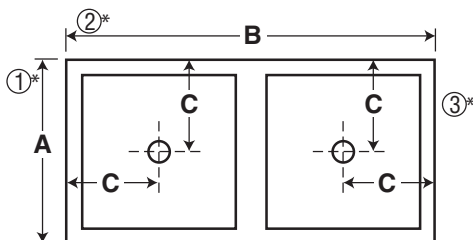
Indicate no. of Flanged sides*
 one two three four
 (Provide sketch)



MODEL	SIZE		A		B		C		D		E	
	IN	MM	IN	MM	IN	MM	IN	MM	IN	MM	IN	MM
34-NC	36 x 36	915 x 915	36	915	36	915	12	305	18	455	25-3/8	651



MODEL	SIZE		A		B		C		D	
	IN	MM	IN	MM	IN	MM	IN	MM	IN	MM
34	36 x 36	915 x 915	36	915	36	915	18	455	—	—
34.5	48 x 36	1219 x 915	36	915	48	1219	24	610	18	457
36-D	36 x 72	915 x 1830	36	915	72	1830	36	915	18	457



MODEL	SIZE		A		B		C	
	IN	MM	IN	MM	IN	MM	IN	MM
36-DD	36 x 72	915 x 1830	36	915	72	1830	18	455

Note: All dimensions subject to manufacturing variance of plus or minus 1/4" (6 MM).