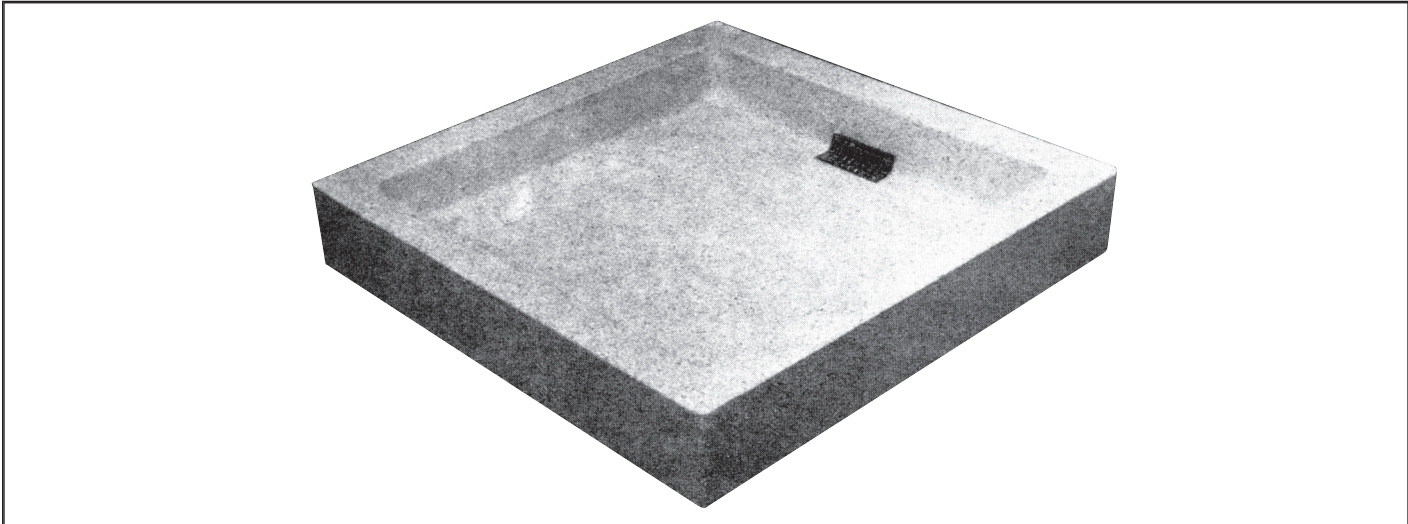


SHOWER FLOOR
 Model No. () Size ()
 — For off-the-floor roughing —

Shower Floor shall be of Williams precast terrazzo. Terrazzo shall be made of black and white marble chips cast in white Portland cement to produce a compressive strength of not less than 3000 PSI, seven days after casting. Terrazzo surface shall be ground smooth, grouted and sealed to resist stain. Flange cast integral shall be of galvanized-bonderized steel and shall extend not less than one inch above the shoulder. Drain body shall be cast integral and shall provide for a 2" female I.P.S outlet. Removable type strainer plate shall be made of C.P. brass.

STERN
WILLIAMS
BACK OUTLET
 SHOWER FLOORS
ARCHITECTURAL
SPECIFICATIONS



SERPENTINE BACK OUTLET SHOWER FLOORS*

MODEL	SIZE
34-BO	36"x36"x6"

{ Flanged
and/or
rabbet }



SERPENTINE BACK OUTLET SHOWER FLOORS*

MODEL	SIZE
52-BO	32"x32"x4"
54-BO	36"x36"x4"

JOB

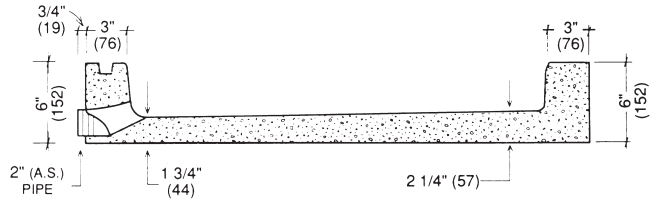
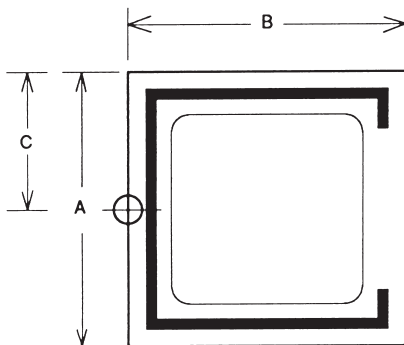
ENGINEER

LOCATION

CONTRACTOR

Serpentine
BACK OUTLET SHOWER FLOORS
 For off-the-floor roughing

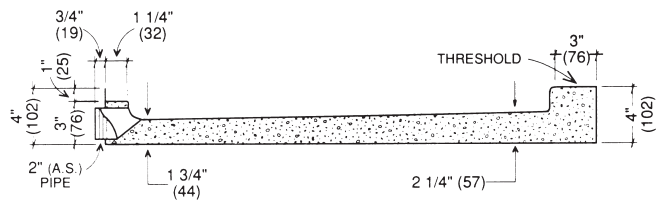
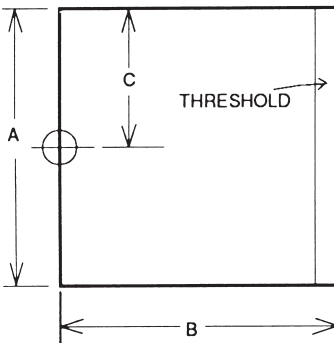
{ Flanged
 and/or
 rabbet }



MODEL	SIZE		A		B		C	
	Inches	MM	Inches	MM	Inches	MM	Inches	MM
34-BO	36x36	915x915	36	915	36	915	18	457

Specifications: Model No. () Size () as manufactured by Stern-Williams, Inc. Terrazzo shall be of black and white marble chips cast in white Portland cement to produce a compressive strength of not less than 3000 PSI seven days after casting. Terrazzo surface shall be ground smooth, grouted and sealed to resist stain. Drain shall be brass with a removable chrome-plated brass strainer, and shall provide for a 2" Female I.P.T. outlet.

Trieste
BACK OUTLET SHOWER FLOORS — With Threshold
 For off-the-floor roughing



MODEL	SIZE		A		B		C	
	Inches	MM	Inches	MM	Inches	MM	Inches	MM
52-BO	32x32	813x813	32	813	32	313	16	406
54-BO	36x36	915x915	36	915	36	915	18	457

Note: All dimensions subject to manufacturing variance of plus or minus 1/4" (6 MM).