



STERN-WILLIAMS CO., Inc.

P.O. BOX 8004 • SHAWNEE MISSION, KANSAS 66208-0004
913-362-5635 • FAX 913-362-6689 • www.sternwilliams.com

DRINKING FOUNTAIN SPECIFICATIONS

MODEL: BF-5000

TYPE: Dual level-wall hung handicap accessible.

BODIES: Beveled front 18 gauge, type 304 brushed stainless steel with vandal resistant bottom plates.

RECEPTORS: Formed in sheet of 18 gauge body with chrome plated brass drain plugs.

BUBBLERS: Chrome plated brass, locked to receptor.

VALVES: Chrome plated brass push button assemblies on front panel with adjustable flow regulating valves.

MOUNTING: Protective 20 gauge brushed stainless steel back plate secured over plain DFMP-2 mounting plate. Hex bolts, nuts, washers and nylon spacers provided.

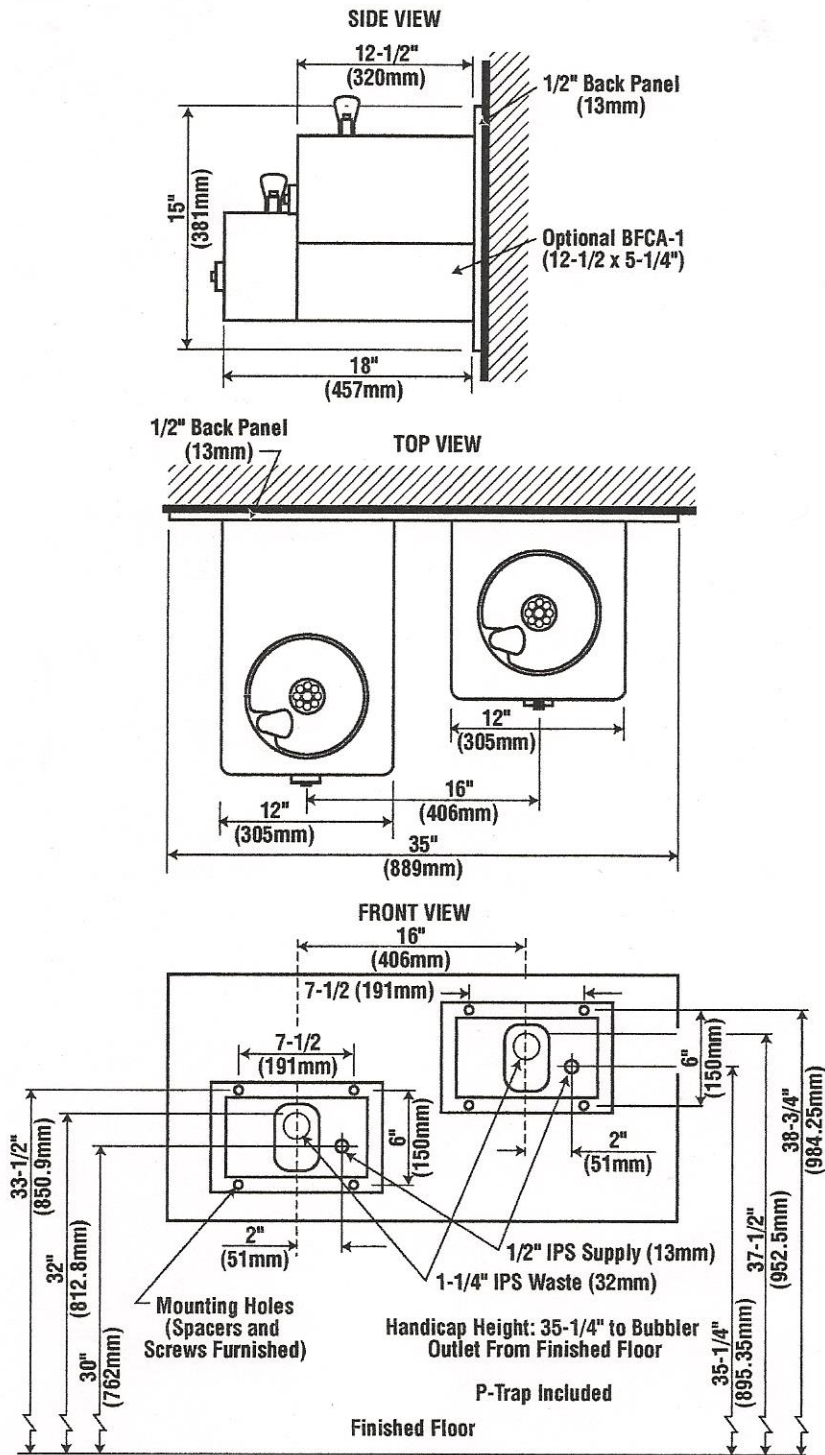
WASTES: 1-1/4" chrome plated tubular assemblies with P-traps.

SUPPLIES: 1/2" reinforced vinyl tubing with 1/2" IPS hook-up and stainless steel fittings.

OPTIONS: BFCA cane touch apron
-FP frost proof valve system
-RV reverse heights

MODEL BF-5000

Barrier Free, Dual Level Wall-mounted Drinking Fountain — Stainless Steel
Push Button on Front Panel



NOTE: THESE ROUGH-IN DIMENSIONS
MAY VARY 1/2" (13 mm) PLUS OR MINUS

Note: All dimensions subject to manufacturing variance of plus or minus 1/4" (6 MM).