

# STERN-WILLIAMS PRODUCTS, LLC.

# IMPORTANT

## KEEP FOR FUTURE REFERENCE

## INSTALLATION INSTRUCTIONS FOR

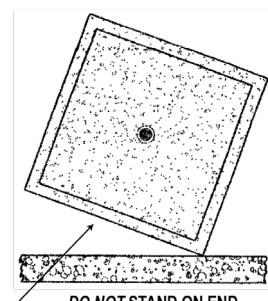
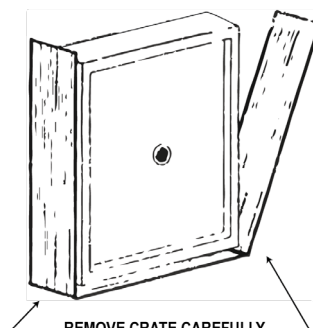
## MOP SINKS & SHOWER FLOORS

1. **Do not stack, store or transport mop sinks & shower floors flat**

2. **Do Not Lift By Flange**

Remove crate at installation point. Do not rock Mop Sink or Shower Floor on edges. (This precaution will prevent damage to corners).

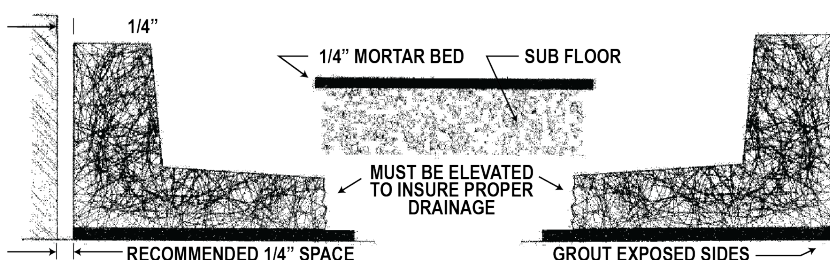
Method for checking face of sink or shower floor for transportation damage prior to installation:



- A. Wipe face of sink or shower floor with a wet cloth. (Water).
- B. When the water evaporates, any slight crack will be noticeable.
- C. Do not install unit if cracked or damaged. This will void the warranty.

3. **Level Receptor Carefully**

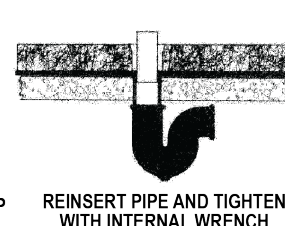
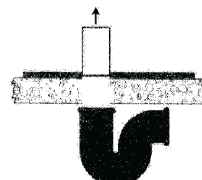
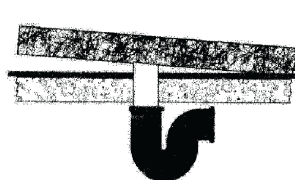
Establish proper clearance between sink or floor and wall. A layer of mortar should be placed in area where the sink or floor is to be installed. This procedure is recommended in order to support sink or floor in case the sub floor is uneven. Grout exposed edges.



**NOTE:** Mortar should cover the entire area between receptor and building floor. ( $\frac{1}{4}$ " min.)

4. **WARNING**

Do not drop sink or shower floor over exposed pipe. It is advisable to remove drain pipe and set sink or floor in place. Insert pipe through drain in sink or floor back into "P" trap. Tighten with a internal pipe wrench.

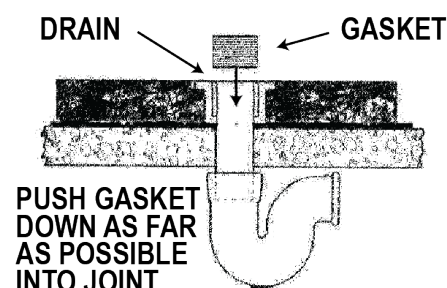
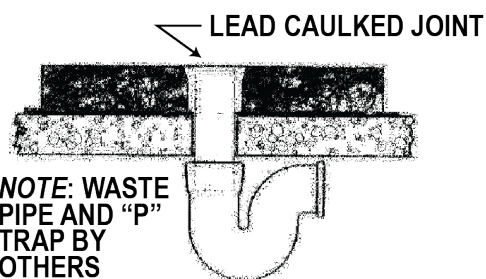


5. **Proper Method of Drain Connection**

A. The lead caulked joint permits limited movements such as normal structural settlement without leakage.

B. Stern-Williams' gaskets are manufactured and tested to seal the space between the inside wall of the drain body and the O.D. of the waste pipe on Stern-Williams products. Using other products may result in damage to the receptor, receptor drain body or pipe, and could result in leakage and damage to the surrounding areas.

- No special tools required
- Quick, easy installation
- No glues, threading or soldering



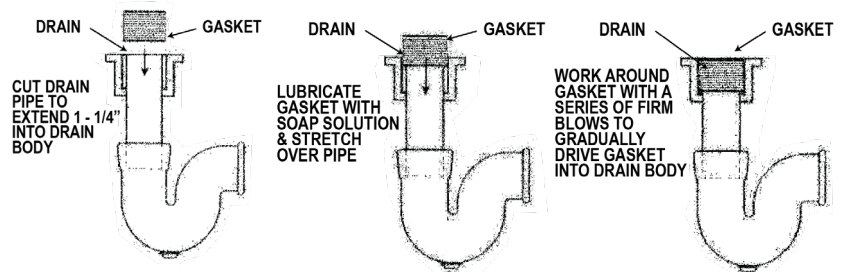
SEE REVERSE SIDE FOR MORE INSTRUCTIONS

# FRAGILE

DO NOT STACK FLAT

## INSTALLATION INSTRUCTIONS ENCLOSED

Cut drain pipe to extend 1 1/4" into drain body. Drain pipe should be even with top of gasket when installation is completed. Position mop sink or shower floor over waste pipe ensuring that pipe is centered in drain body.



Lubricate gasket with soap solution and stretch over pipe with letters facing up.

Push gasket as far as possible into joint.

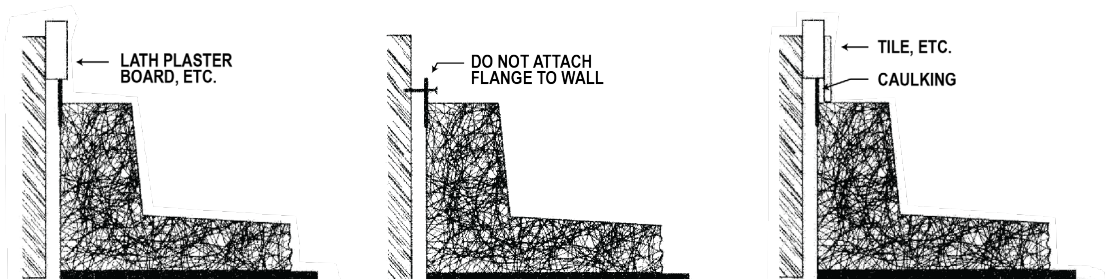
Using a hammer and caulking tool or a 1/4" X 3/4" x 6" piece of wood instead of a caulking tool, work around gasket with a series of firm blows and gradually drive gasket into drain body until it bottoms. Drain pipe should be even with top of gasket.

Test connection before covering or concealing. To test: plug drain and fill receptor with water. Check for leaks.

Gasket installs by pushing into place with hand force only. If the gasket is NOT compressed, it will leak.

### 6. **WARNING!**

- A. Do not let rough wall material overlap flange.
- B. Do not attach flange to wall of building.
- C. Let finished wall (tile, etc.) overlap and rest on shoulder.



### 7. **Terrazzo Maintenance & Sealers**

New terrazzo should be scrubbed as frequently as the amount and type of use demands. Use a good, neutral cleaner or scouring cleaner solution containing the least amount of cleaner that experience demonstrates is sufficient to loosen the dirt. The cleansing agents must be free from alkali, acids or other strong ingredients that may ruin the surface. Remove the dirt and the dirty water and rinse the terrazzo clean.

Clean terrazzo is not slippery. The factors of slipperiness are the same as those encountered on any smooth surface; principally surface films. A residual film of cleaning material is a common cause of slipperiness. So, for shower floors, take extra care to rinse thoroughly.

A penetrating sealer has been applied to each unit. After thorough cleaning, a surface sealer that has been specifically designed for terrazzo surfaces can be reapplied periodically.



**STERN-WILLIAMS**  
13920 Cypress Ln. Grandview, MO 64030

800.323.2359  
sternwilliams.com