

MODEL 5300 & 5305 SINGLE WALL MOUNTED DRINKING FOUNTAINS

Striking design with clean, sleek lines. Designed to defy the elements, resist vandals and stand up to hard use. The chrome-plated brass bubbler is locked to the stainless steel receptor. Push button valve is vandal resistant and recessed in steel plate. Vandal resistant bubbler guard.

ADA Compliant

Model 5300 is front mounted.

Model 5305 is rear mounted.

-FP are frost proof models.

It is recommended that a dual check valve backflow prevention be installed in the waterline going to any FP fountain.



(Shown above) Model 5300

FEATURES

- Mounting plate and stainless steel bottom plate come standard
- Access plates are vandal resistant and provide easy maintenance
- Push button chrome plated brass valve recessed in 3/8" steel plate
- Steel bubbler guard(s) and chrome plated brass bubbler
- Adjustable flow regulation
- Heavy 3/8" sheet steel arm
- 18 gauge brush finished stainless steel receptor with a vandal resistant chrome plated brass drain plug
- Stainless steel supply fittings connected to reinforced tubing
- Woodland green powder coat finish with optional colors and stainless steel (-SS) available
- In-line mesh screen strainer
- Attractive, protective stainless steel back plate
- Delivers 8.0 GPH of chilled water refreshment
- Supply complete with 1/2" IPS lock shield screwdriver stop
- 1-1/4" IPS waste pipes included with every fountain

ORDERING OPTIONS

Part Number

5300-



Optional

- SS:** Stainless steel
- FLWMP-1:** Support carrier with mounting plate
- WMP-1:** Mounting plate

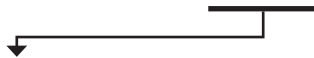
5305-



Optional

- SS:** Stainless steel
- FLWMP-1-FM:** Support carrier with mounting plate
- WMP-1-FM:** Mounting plate

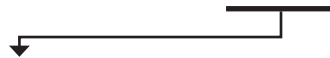
5300-FP-



Optional

- SS:** Stainless steel
- FLWMP-1:** Support carrier with mounting plate
- WMP-1:** Mounting plate

5305-FP-



Optional

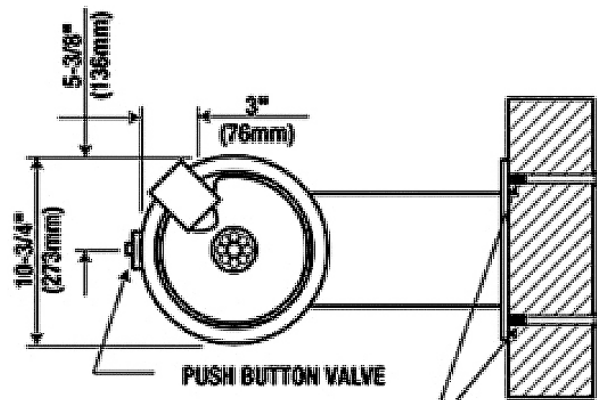
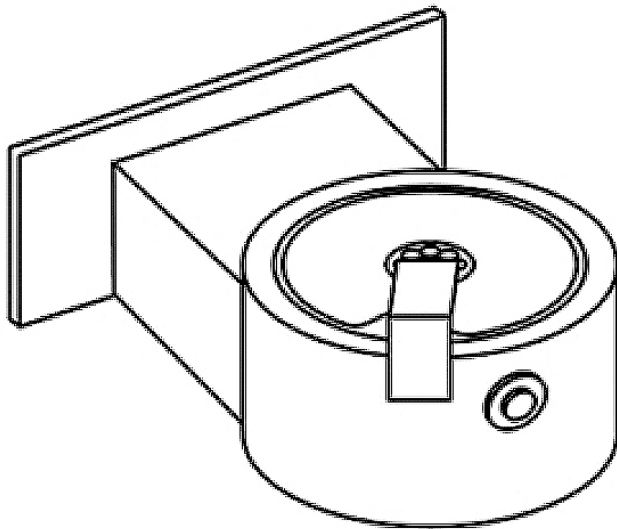
- SS:** Stainless steel
- FLWMP-1-FM:** Support carrier with mounting plate
- WMP-1-FM:** Mounting plate

*A maximum of 3 options may be added to a fountain.
-FP are frost proof models

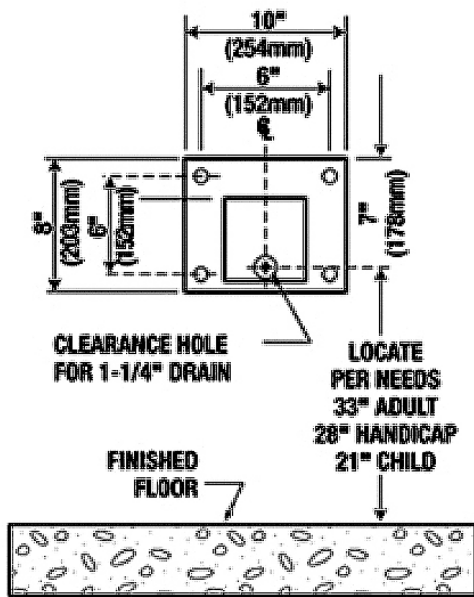
DIMENSIONS

All dimensions subject to manufacturing variance of plus or minus 1/4" (6 mm)

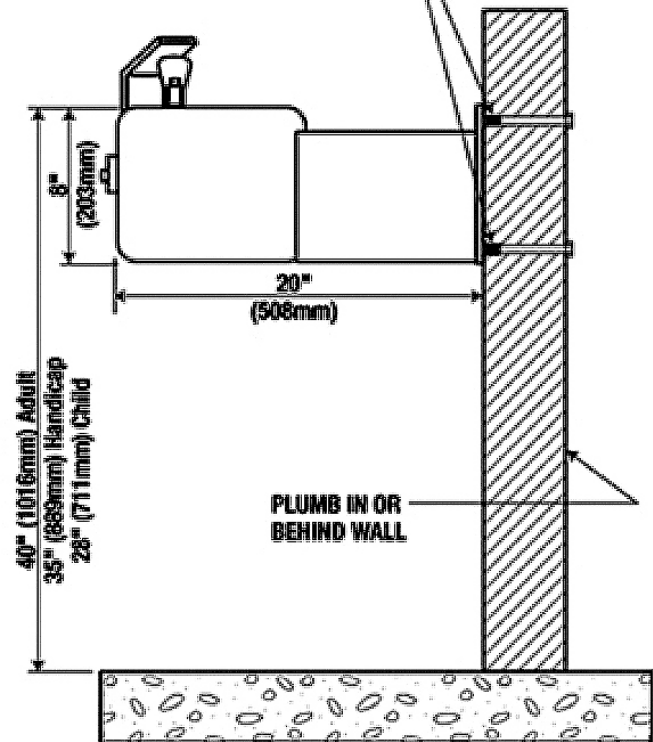
- 5300** 8"H x 20" L / Wall mounted
- 5300-FP** 8"H x 20" L / Wall mounted
- 5305** 8"H x 20" L / Wall mounted
- 5305-FP** 8"H x 20" L / Wall mounted



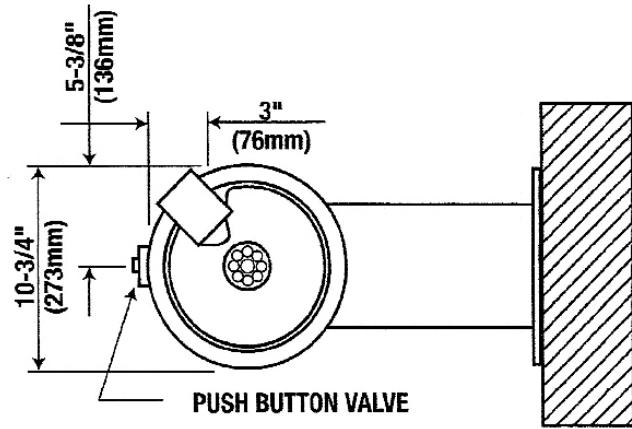
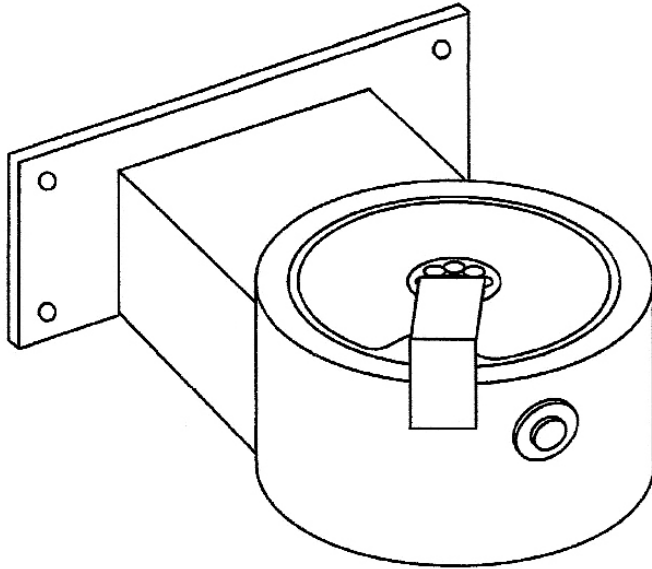
**ANCHOR TO WALL WITH
1/2"-13 COUPLING NUTS
ON OUTSIDE 4 PLACES**



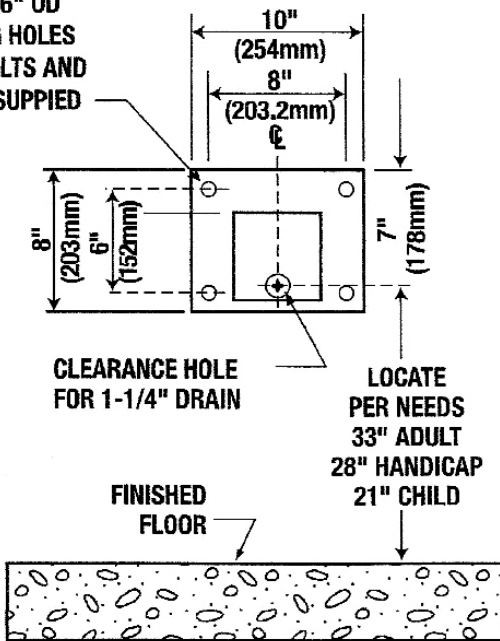
VIEW FOR MOUNTING



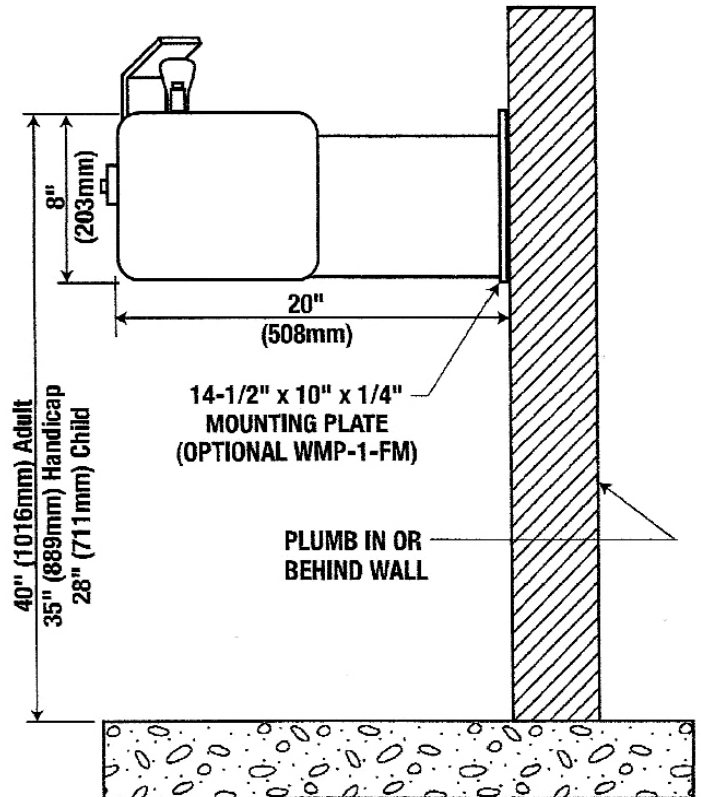
**NOTE: OPTIONAL FLOOR SUPPORT CARRIER
FLWMP-1 IS AVAILABLE AND ADVISABLE
FOR IN WALL INSTALLATION.**



FOUR 9/16" OD MOUNTING HOLES FOR 1/2" BOLTS AND WASHERS SUPPLIED



VIEW FOR MOUNTING



NOTE: OPTIONAL FLOOR SUPPORT CARRIER FLWMP-1-FM IS AVAILABLE AND ADVISABLE FOR IN WALL INSTALLATION.