

MODEL 5315 & 5320 DUAL WALL MOUNTED DRINKING FOUNTAINS

Striking design with clean, sleek lines. Designed to defy the elements, resist vandals and stand up to hard use. The chrome-plated brass bubbler is locked to the stainless steel receptor. Push button valve is vandal resistant and recessed in steel plate.

ADA Compliant

-FP are frost proof models.

5315 Models are rear mounted.

5320 Models are front mounted.



It is recommended that a dual check valve backflow prevention be installed in the waterline going to any FP fountain.

(Shown above) Model 5315

FEATURES

- Mounting plate and stainless steel bottom plate come standard
- Access plates are vandal resistant and provide easy maintenance
- Push button chrome plated brass valve recessed in 3/8" steel plate
- Steel bubbler guard(s) and chrome plated brass bubbler
- Adjustable flow regulation
- Heavy 3/8" sheet steel arm
- 18 gauge brush finished stainless steel receptor with a vandal resistant chrome plated brass drain plug
- Stainless steel supply fittings connected to reinforced tubing
- Woodland green powder coat finish with optional colors and stainless steel (-SS) available
- In-line mesh screen strainer
- Attractive, protective stainless steel back plate
- Delivers 8.0 GPH of chilled water refreshment
- Supply complete with 1/2" IPS lock shield screwdriver stop
- 1-1/4" IPS waste pipes included with every fountain

ORDERING OPTIONS

Part Number

5315-



Optional

- RV:** Reverse heights
- SS:** Stainless steel
- BFCE-15:** Cane extension (must be requested at order placement)
- BFCE-15-RV:** Reverse heights
- FLWMP-2-FM:** Support carrier with mounting plate
- FLMP-2-RV-FM:** Same reversed heights
- WMP-2-FM:** Mounting plate
- WMP-2-RV-FM:** Same reversed heights

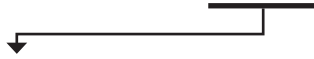
5320-



Optional

- RV:** Reverse heights
- SS:** Stainless steel
- BFCE-15:** Cane extension (must be requested at order placement)
- BFCE-15-RV:** Reverse heights
- FLWMP-2-FM:** Support carrier with mounting plate
- FLMP-2-RV-FM:** Same reversed heights
- WMP-2-FM:** Mounting plate
- WMP-2-RV-FM:** Same reversed heights

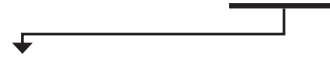
5315-FP-



Optional

- RV:** Reverse heights
- SS:** Stainless steel
- BFCE-15:** Cane extension (must be requested at order placement)
- BFCE-15-RV:** Reverse heights
- FLWMP-2-FM:** Support carrier with mounting plate
- FLMP-2-RV-FM:** Same reversed heights
- WMP-2-FM:** Mounting plate
- WMP-2-RV-FM:** Same reversed heights

5320-FP-



Optional

- RV:** Reverse heights
- SS:** Stainless steel
- BFCE-15:** Cane extension (must be requested at order placement)
- BFCE-15-RV:** Reverse heights
- FLWMP-2-FM:** Support carrier with mounting plate
- FLMP-2-RV-FM:** Same reversed heights
- WMP-2-FM:** Mounting plate
- WMP-2-RV-FM:** Same reversed heights

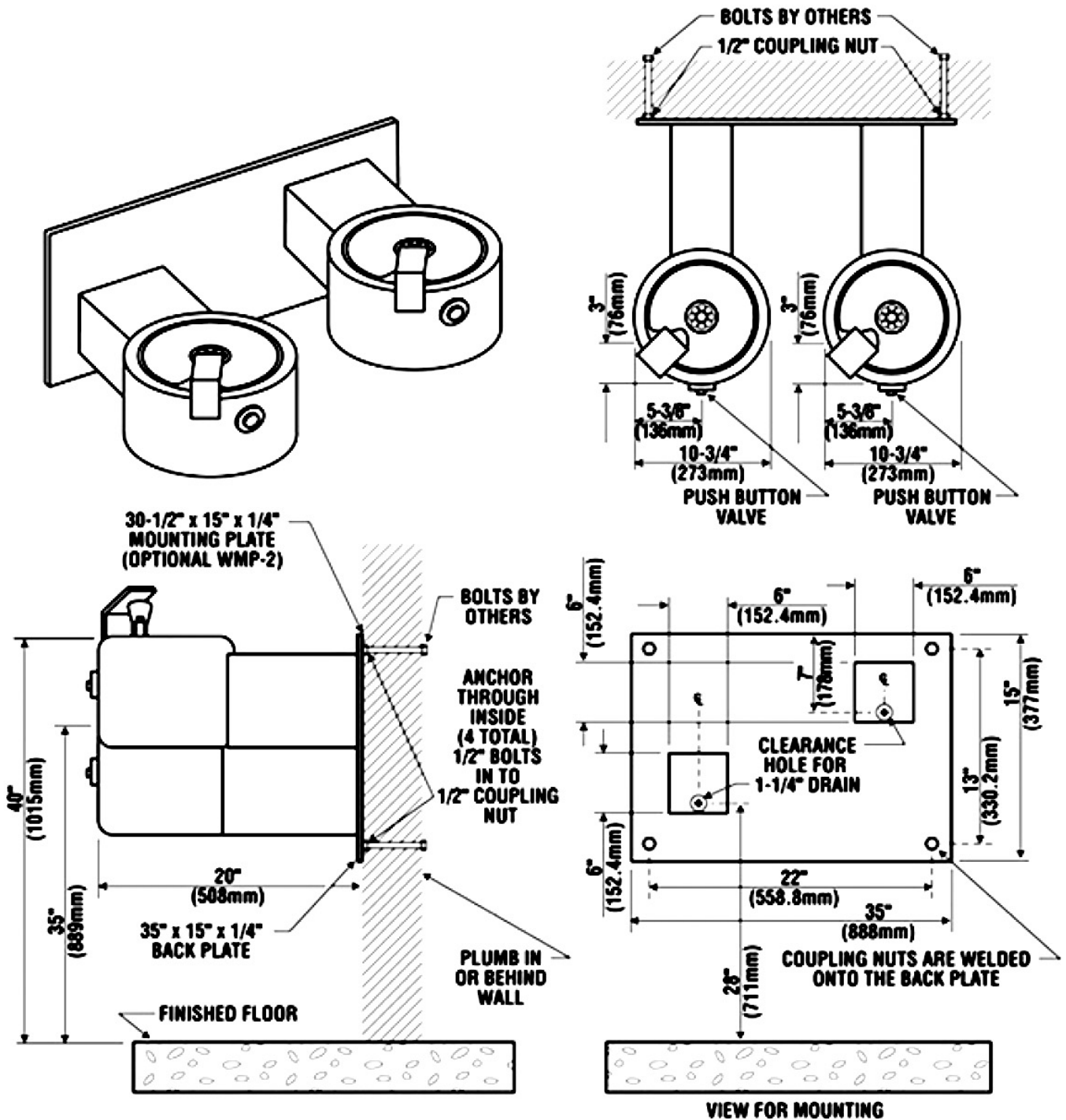
*A maximum of 3 options may be added to a fountain.

-FP are frost proof models

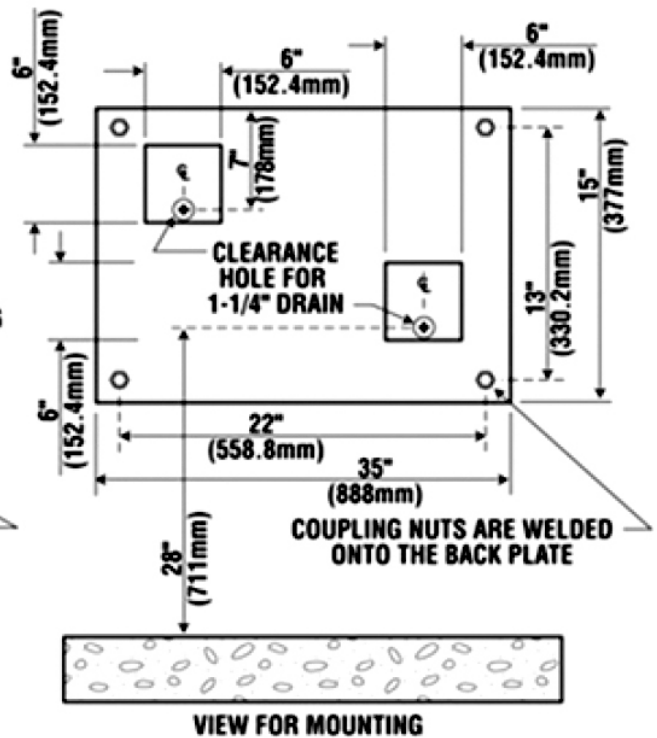
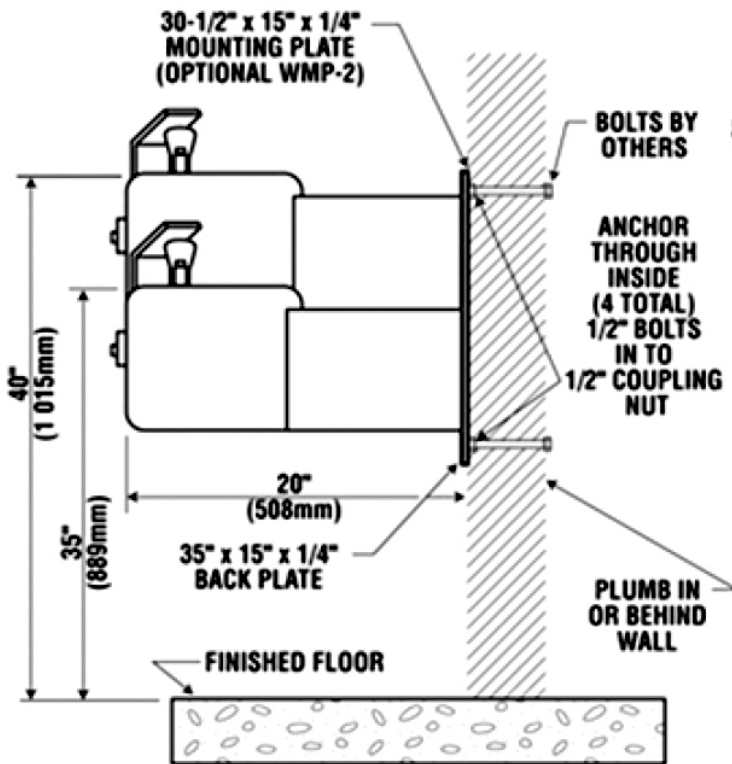
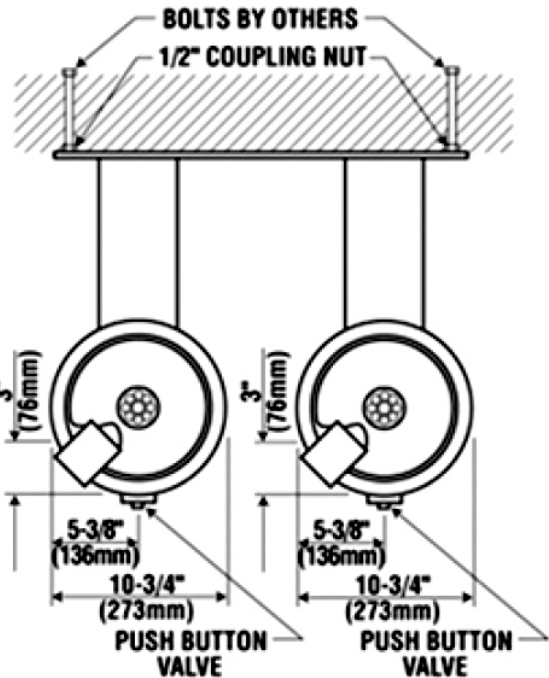
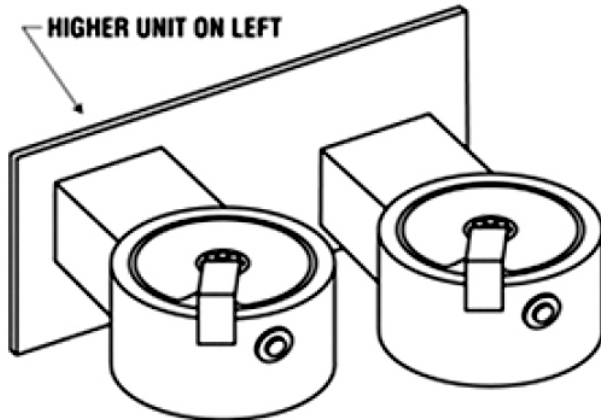
DIMENSIONS

All dimensions subject to manufacturing variance of plus or minus 1/4" (6 mm)

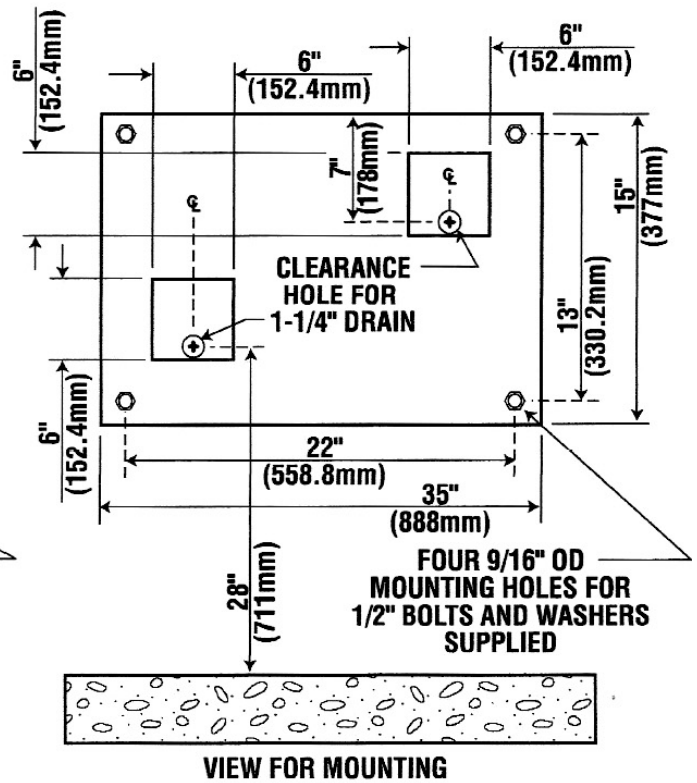
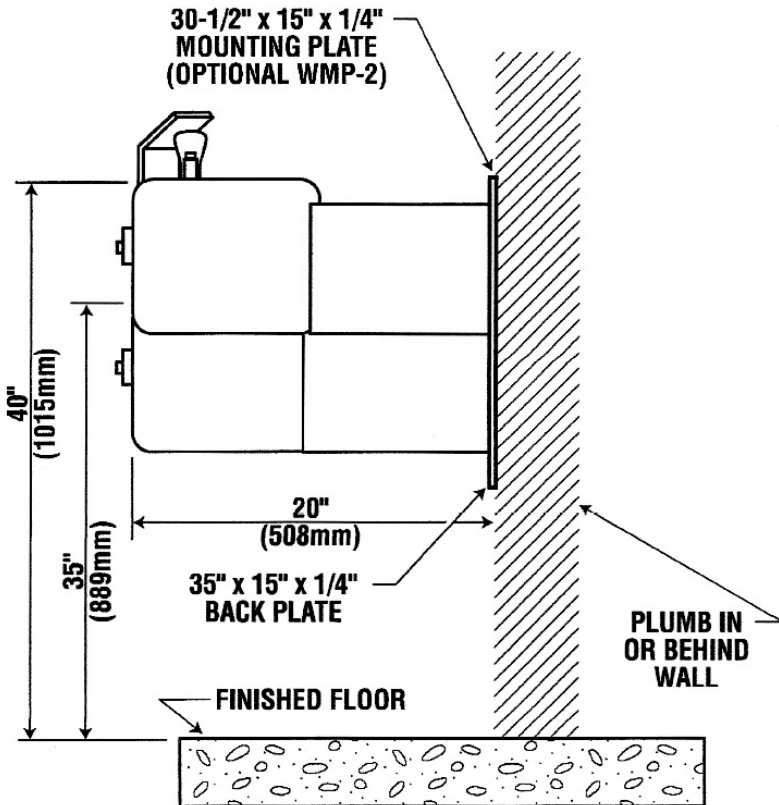
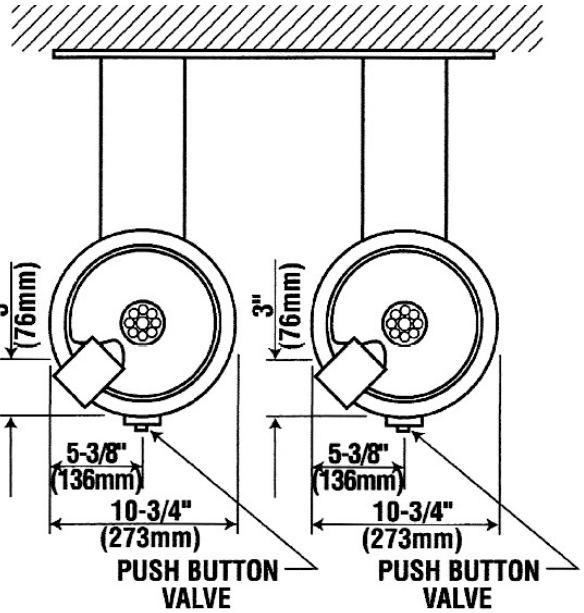
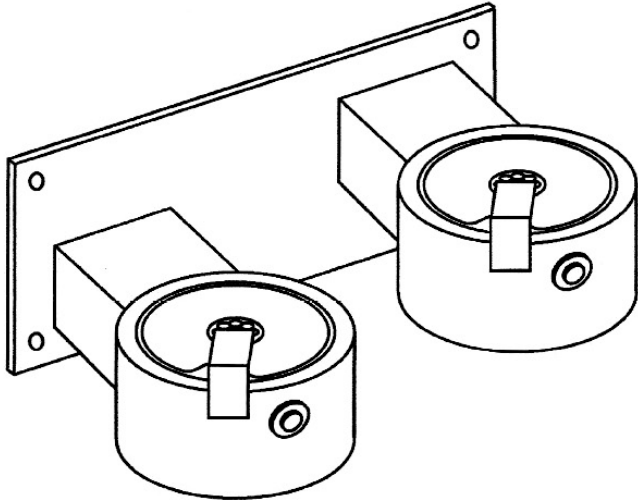
- 5315** 13"H x 20" L / Dual wall mounted with back plate
- 5315-FP** 13"H x 20" L / Dual wall mounted with back plate
- 5320** 13"H x 20" L / Dual wall mounted with front plate
- 5320-FP** 13"H x 20" L / Dual wall mounted with front plate



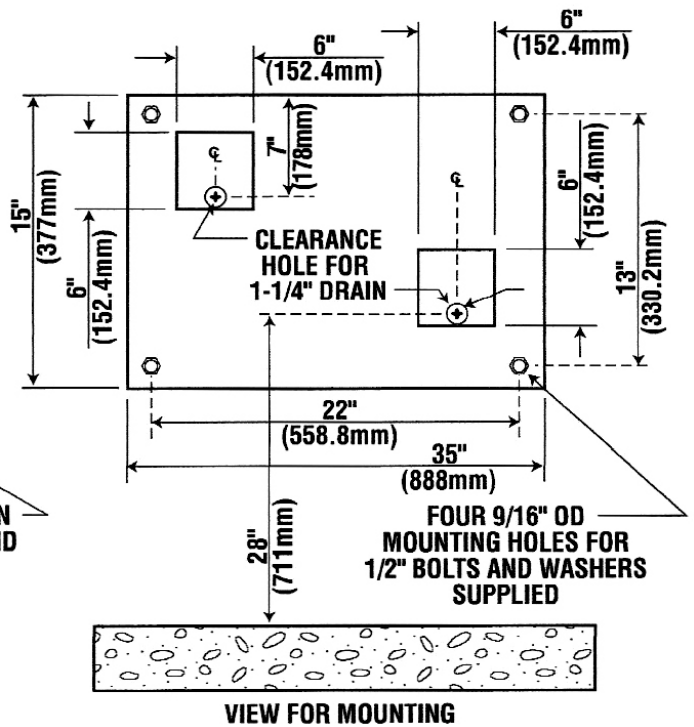
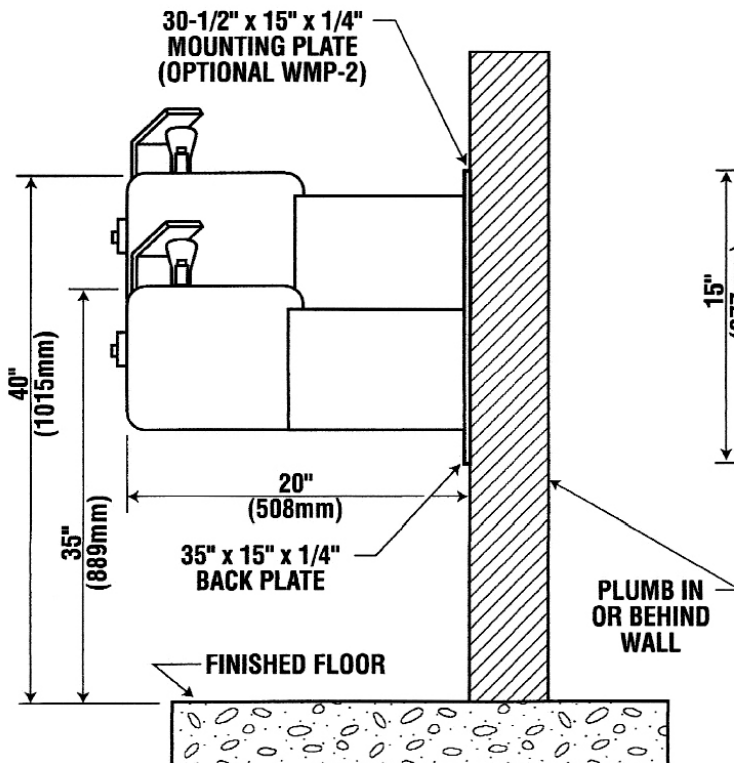
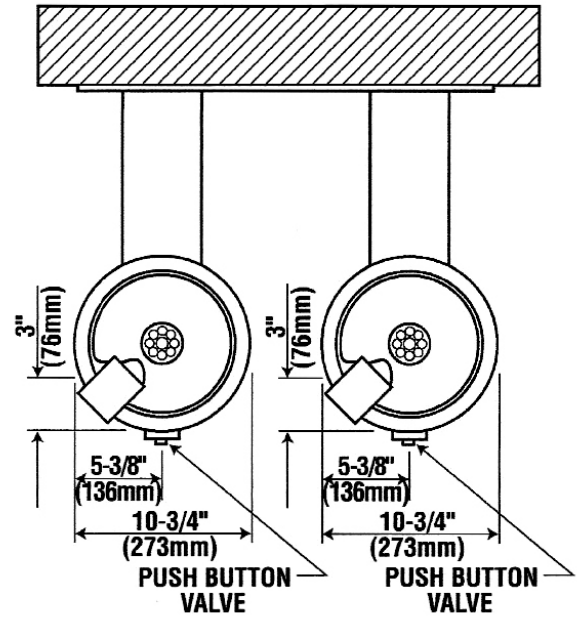
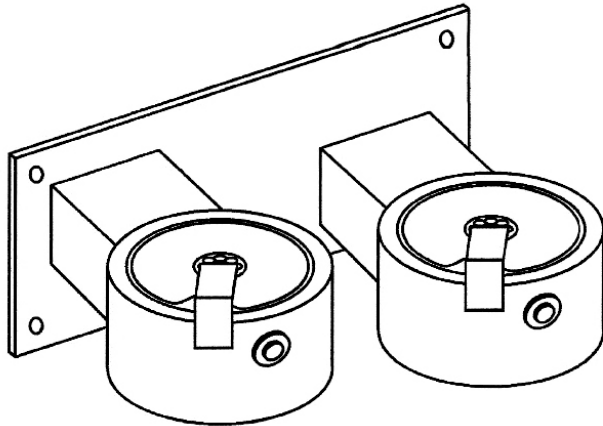
NOTE: OPTIONAL FLOOR SUPPORT CARRIER FLWMP-2 IS AVAILABLE AND ADVISABLE FOR IN WALL INSTALLATION.



NOTE: OPTIONAL FLOOR SUPPORT CARRIER FLWMP-2-RV IS AVAILABLE AND ADVISABLE FOR IN WALL INSTALLATION.



NOTE: OPTIONAL FLOOR SUPPORT CARRIER FLWMP-2-FM IS AVAILABLE AND ADVISABLE FOR IN WALL INSTALLATION.



NOTE: OPTIONAL FLOOR SUPPORT CARRIER FLWMP-2-RV-FM IS AVAILABLE AND ADVISABLE FOR IN WALL INSTALLATION.