

## MODEL 9000, 9002 & 9004-MWL PET FOUNTAINS

Our line of pet fountains are great for resorts, parks, and walking trails where pets are welcome. The Model 9000, 9002, and 9004 pet fountains are designed to comply with pet needs and withstand the roughest conditions.

-FP are frost proof models.

Model 9000 are single fountains.

Model 9002 are dual fountains.

Model 9004-MWL is a wall-mounted fountain.

It is recommended that a dual check valve backflow prevention be installed in the waterline going to any FP fountain

### FEATURES

- Column is fabricated from one piece steel pipe and all exposed parts are recessed in welded steel plates
- Mounting plate comes standard
- Access plates are vandal resistant and provide easy maintenance
- Push button chrome plated brass valve recessed in 3/8" steel plate
- Steel bubbler guard(s)
- Adjustable flow regulation
- 18 gauge brush finished stainless steel receptor with a vandal resistant chrome plated brass drain plug
- Stainless steel supply fittings connected to reinforced tubing
- Woodland green powder coat finish with optional colors and stainless steel (-SS) available
- In-line mesh screen strainer
- Timer controlled pet spray with recessed vandal resistant spray head (9000-92 only)
- 6-5/8" diameter steel pipe with 1/8" wall thickness
- Available as a wall-mounted model
- Delivers 8.0 GPH of chilled water refreshment
- Supply complete with 1/2" IPS lock shield screwdriver stop
- 1-1/4" IPS waste pipes included with every fountain



(Shown above) Model 9000



## ORDERING OPTIONS

Part Number

**9000-**



**Optional**

- ☐ **SS:** Stainless steel finish
- ☐ **32-SC:** Self closing hose bibb
- ☐ **66:** Hose bibb and hose
- ☐ **98:** Leash hook
- ☐ **SMP-6:** Surface mounting plate

**9002-**



**Optional**

- ☐ **SS:** Stainless steel finish
- ☐ **32-SC:** Self closing hose bibb
- ☐ **66:** Hose bibb and hose
- ☐ **98:** Leash hook
- ☐ **SMP-6:** Surface mounting plate

**9004-MWL-**



**Optional**

- ☐ **SS:** Stainless steel finish
- ☐ **32-SC:** Self closing hose bibb
- ☐ **66:** Hose bibb and hose
- ☐ **98:** Leash hook
- ☐ **SMP-6:** Surface mounting plate

\*A maximum of 3 options may be added to a fountain.

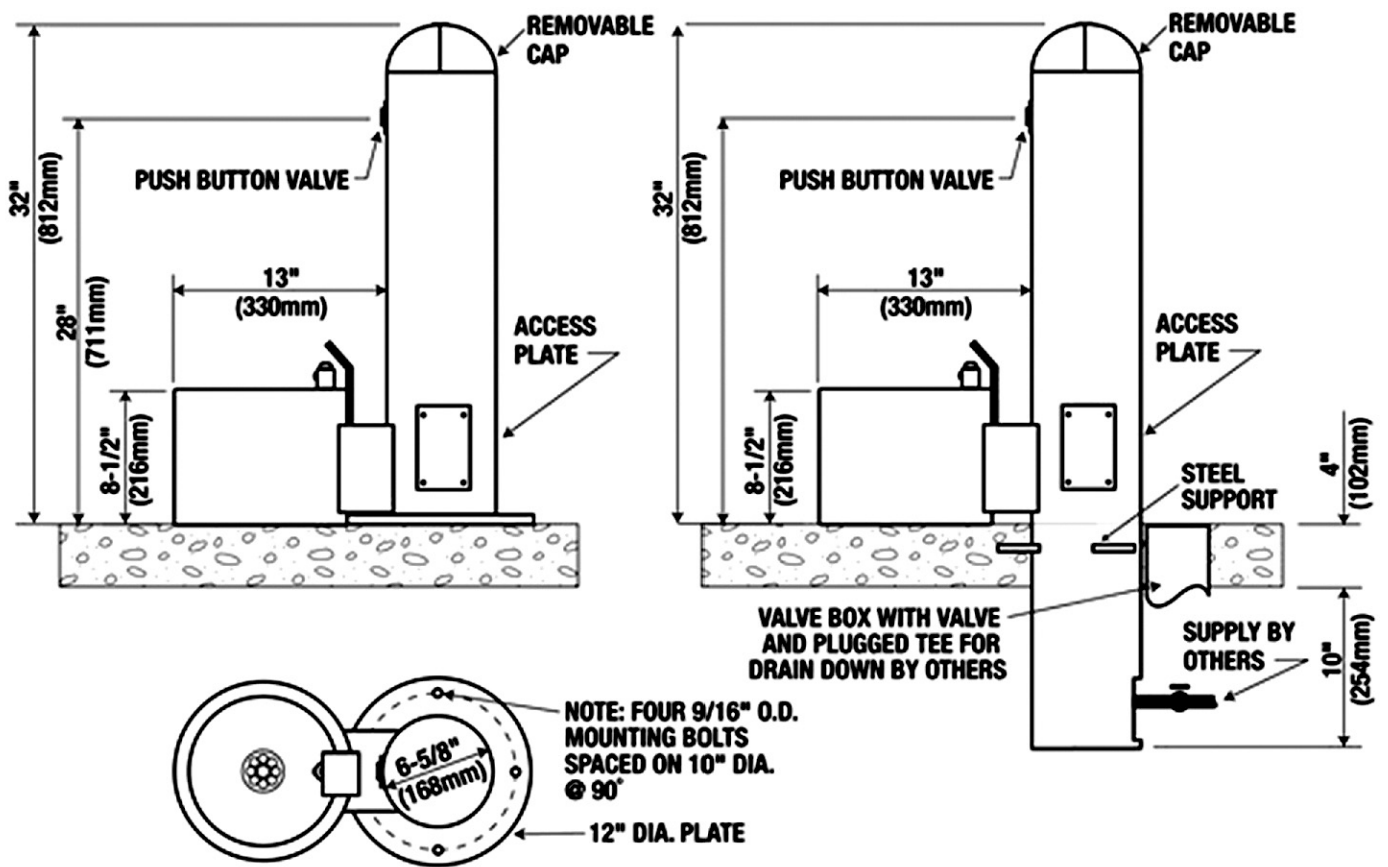
## DIMENSIONS

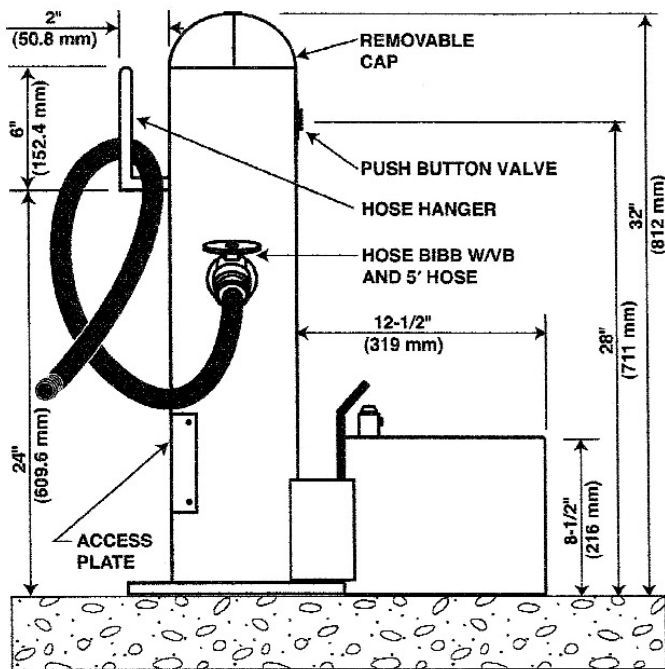
These rough-in dimensions may vary 1/2" (13 mm) plus or minus

**9000** 32"H x 6-5/8"Dia. x 19-5/8"W

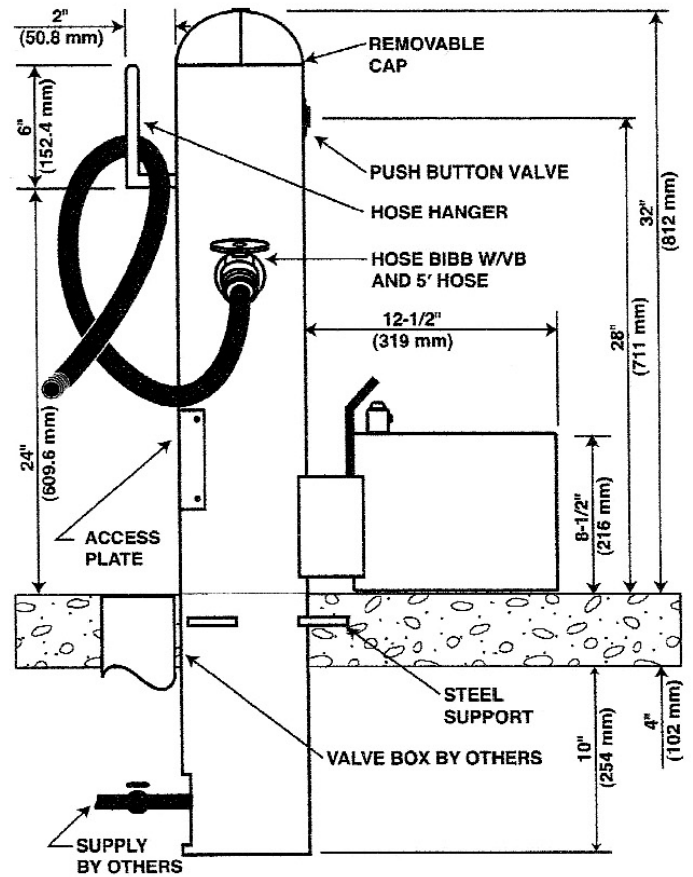
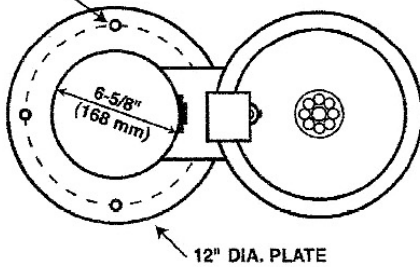
**9002** 32"H x 6-5/8" Dia. x 32-1/8"W

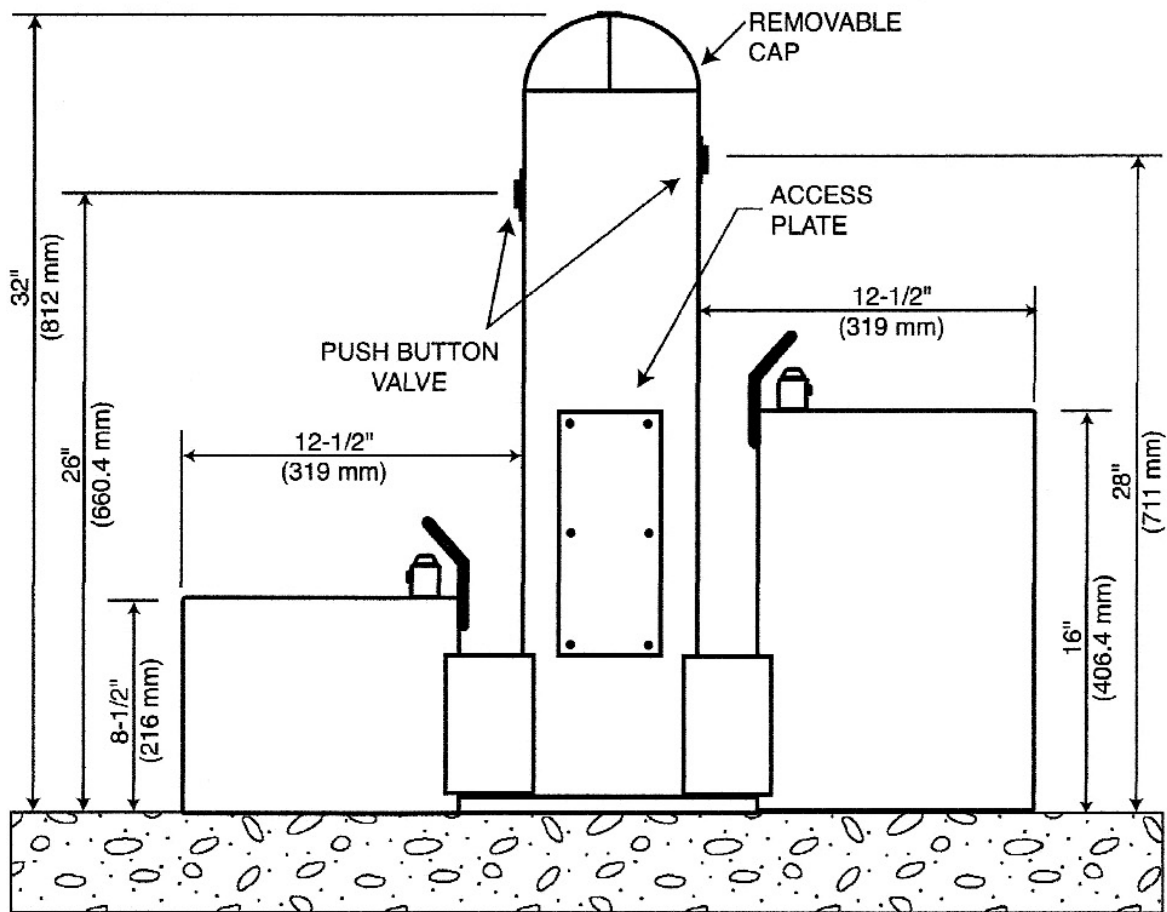
**9004-MWL** 28"H x 6-5/8"Dia. x 12-1/2"W



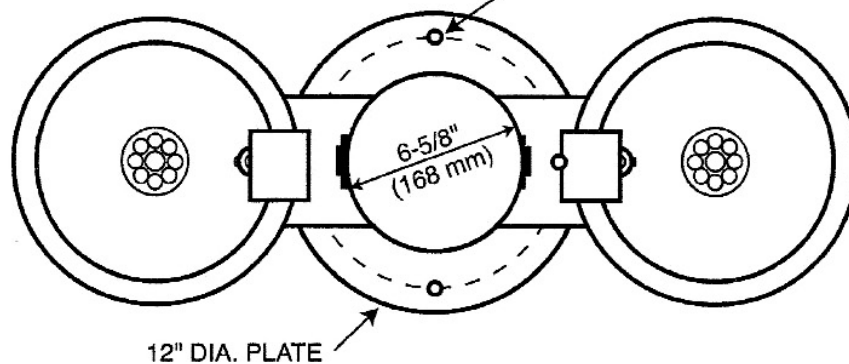


NOTE: FOUR 9/16" O.D. MOUNTING HOLES SPACED ON 10" DIA. @ 90°

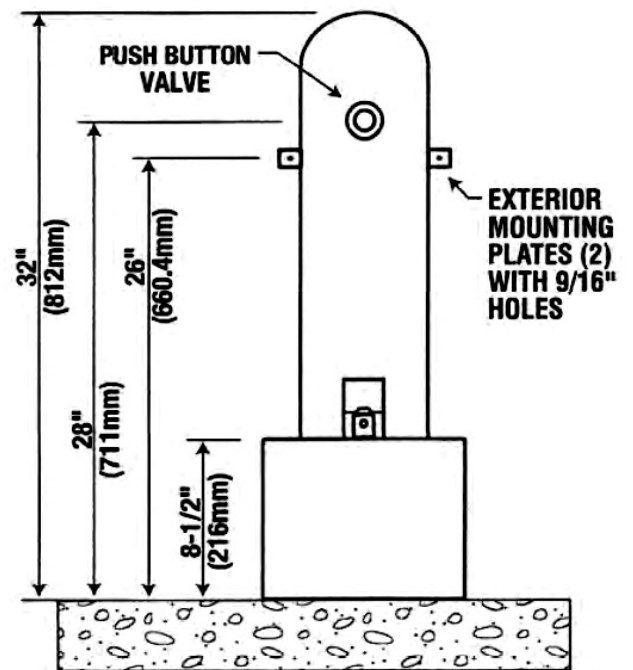
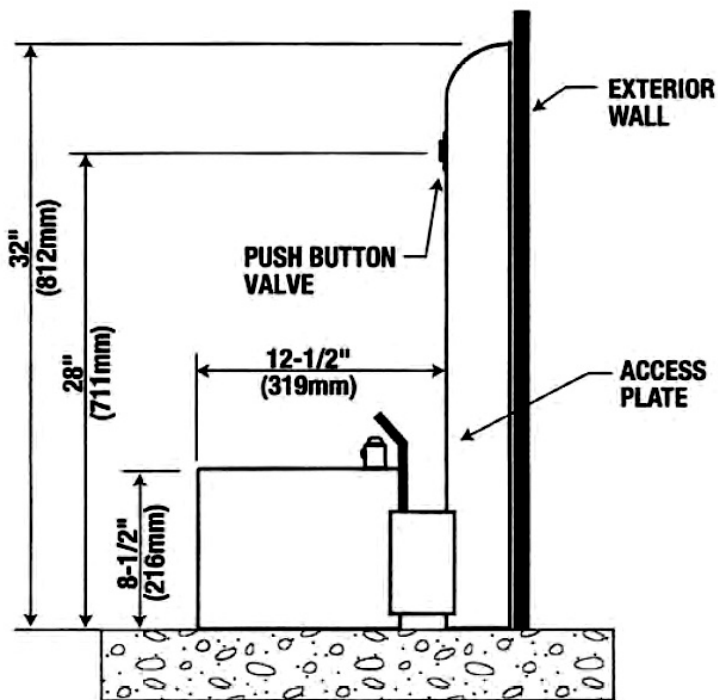




NOTE: FOUR 9/16" O.D. MOUNTING BOLTS SPACED ON 10" DIA. @ 90°



## 9004-MWL



**2 (9/16") HOLES FOR 1/2" BOLTS ON  
BASE PLATE FOR SURFACE MOUNT**

