

MODEL APF-3500-C & APF-3501-C

SINGLE AGGREGATE FOUNTAIN

These all-purpose fountains are ideal for high traffic and maintain a great finish in rough environments. Delivers 8.0 GPH of chilled water refreshment.

Surface type with mounting plate welded to pedestal.

-FP are frost proof models. It is recommended that a dual check valve backflow prevention be installed in the waterline going to any FP fountain.

-FPS are sanifrost models which will not allow stored water to re-enter the bubbler.

FEATURES

- Mounting plate and stainless steel bottom plate come standard
- Push button valve, centered on vandal resistant stainless steel access plate
- Adjustable flow regulation
- 18 gauge brush finished stainless steel receptor with a vandal resistant chrome plated brass drain plug
- Stainless steel supply fittings connected to reinforced tubing
- In-line mesh screen strainer
- Delivers 8.0 GPH of chilled water refreshment
- Available in single, double or triple fountain styles (see ADF-3700 or ADF-3900)
- Supply complete with 1/2" IPS lock shield screwdriver stop
- 1-1/4" IPS waste pipes included with every fountain



(Shown above) Model APF-3500-C-94

ORDERING OPTIONS

Part Number

APF-3500-C-



Optional

- ☐ **31:** Chrome Plated Self-closing Jug Filler
- ☐ **32:** RCP Hose bibb with VB
- ☐ **32-LK:** RCP Hose bibb with VB and Loose Key
- ☐ **32-SC:** Self Closing Hose bibb with VB
- ☐ **33-VP:** Hose bibb with lock box
- ☐ **34:** Frost Proof Jug Filler
- ☐ **35-VP:** Recessed Hose Bibb with Locking Cover
- ☐ **36:** Push Button Jug Filler
- ☐ **37:** Foot spray
- ☐ **38:** Shutdown/Drain Valve
- ☐ **40:** Commemorative plaque
- ☐ **42:** S.S. bubbler guard
- ☐ **65:** Matching step
- ☐ **84:** Water filter
- ☐ **85:** Valve Box (Recommended for -FP)
- ☐ **94:** Pet fountain
- ☐ **94-FP:** Frost proof
- ☐ **95:** Sand trap
- ☐ **96:** Sand strainer plate
- ☐ **SMP-12S:** Surface mounting plate

APF-3500-C-FP-



Optional

- ☐ **31:** Chrome Plated Self-closing Jug Filler
- ☐ **32:** RCP Hose bibb with VB
- ☐ **32-LK:** RCP Hose bibb with VB and Loose Key
- ☐ **32-SC:** Self Closing Hose bibb with VB
- ☐ **33-VP:** Hose bibb with lock box
- ☐ **34:** Frost Proof Jug Filler
- ☐ **35-VP:** Recessed Hose Bibb with Locking Cover
- ☐ **36:** Push Button Jug Filler
- ☐ **37:** Foot spray
- ☐ **38:** Shutdown/Drain Valve
- ☐ **40:** Commemorative plaque
- ☐ **42:** S.S. bubbler guard
- ☐ **65:** Matching step
- ☐ **84:** Water filter
- ☐ **85:** Valve Box (Recommended for -FP)
- ☐ **94:** Pet fountain
- ☐ **94-FP:** Frost proof
- ☐ **95:** Sand trap
- ☐ **96:** Sand strainer plate
- ☐ **SMP-12S:** Surface mounting plate

APF-3500-C-FPS-



Optional

- ☐ **31:** Chrome Plated Self-closing Jug Filler
- ☐ **32:** RCP Hose bibb with VB
- ☐ **32-LK:** RCP Hose bibb with VB and Loose Key
- ☐ **32-SC:** Self Closing Hose bibb with VB
- ☐ **33-VP:** Hose bibb with lock box
- ☐ **34-FPS:** Sanifrost Jug Filler
- ☐ **35-VP:** Recessed Hose Bibb with Locking Cover
- ☐ **36:** Push Button Jug Filler
- ☐ **37:** Foot spray
- ☐ **38:** Shutdown/Drain Valve
- ☐ **40:** Commemorative plaque
- ☐ **42:** S.S. bubbler guard
- ☐ **65:** Matching step
- ☐ **84:** Water filter
- ☐ **85:** Valve Box (Recommended for -FP)
- ☐ **94:** Pet fountain
- ☐ **94-FPS:** Sanifrost
- ☐ **95:** Sand trap
- ☐ **96:** Sand strainer plate
- ☐ **SMP-12S:** Surface mounting plate

*A maximum of 3 options may be added to a fountain.



ORDERING OPTIONS

Part Number

APF-3501-C-

APF-3501-C-FP-

APF-3501-C-FPS-

Optional

- ☐ **31:** Chrome Plated Self-closing Jug Filler
- ☐ **32:** RCP Hose bibb with VB
- ☐ **32-LK:** RCP Hose bibb with VB and Loose Key
- ☐ **32-SC:** Self Closing Hose bibb with VB
- ☐ **33-VP:** Hose bibb with lock box
- ☐ **34:** Frost Proof Jug Filler
- ☐ **35-VP:** Recessed Hose Bibb with Locking Cover
- ☐ **36:** Push Button Jug Filler
- ☐ **37:** Foot spray
- ☐ **38:** Shutdown/Drain Valve
- ☐ **40:** Commemorative plaque
- ☐ **42:** S.S. bubbler guard
- ☐ **65:** Matching step
- ☐ **84:** Water filter
- ☐ **85:** Valve Box (Recommended for -FP)
- ☐ **94:** Pet fountain
- ☐ **94-FP:** Frost proof
- ☐ **95:** Sand trap
- ☐ **96:** Sand strainer plate
- ☐ **SMP-12S:** Surface mounting plate

Optional

- ☐ **31:** Chrome Plated Self-closing Jug Filler
- ☐ **32:** RCP Hose bibb with VB
- ☐ **32-LK:** RCP Hose bibb with VB and Loose Key
- ☐ **32-SC:** Self Closing Hose bibb with VB
- ☐ **33-VP:** Hose bibb with lock box
- ☐ **34:** Frost Proof Jug Filler
- ☐ **35-VP:** Recessed Hose Bibb with Locking Cover
- ☐ **36:** Push Button Jug Filler
- ☐ **37:** Foot spray
- ☐ **38:** Shutdown/Drain Valve
- ☐ **40:** Commemorative plaque
- ☐ **42:** S.S. bubbler guard
- ☐ **65:** Matching step
- ☐ **84:** Water filter
- ☐ **85:** Valve Box (Recommended for -FP)
- ☐ **94:** Pet fountain
- ☐ **94-FP:** Frost proof
- ☐ **95:** Sand trap
- ☐ **96:** Sand strainer plate
- ☐ **SMP-12S:** Surface mounting plate

Optional

- ☐ **31:** Chrome Plated Self-closing Jug Filler
- ☐ **32:** RCP Hose bibb with VB
- ☐ **32-LK:** RCP Hose bibb with VB and Loose Key
- ☐ **32-SC:** Self Closing Hose bibb with VB
- ☐ **33-VP:** Hose bibb with lock box
- ☐ **34-FPS:** Sanifrost Jug Filler
- ☐ **35-VP:** Recessed Hose Bibb with Locking Cover
- ☐ **36:** Push Button Jug Filler
- ☐ **37:** Foot spray
- ☐ **38:** Shutdown/Drain Valve
- ☐ **40:** Commemorative plaque
- ☐ **42:** S.S. bubbler guard
- ☐ **65:** Matching step
- ☐ **84:** Water filter
- ☐ **85:** Valve Box (Recommended for -FP)
- ☐ **94:** Pet fountain
- ☐ **94-FPS:** Sanifrost
- ☐ **95:** Sand trap
- ☐ **96:** Sand strainer plate
- ☐ **SMP-12S:** Surface mounting plate

*A maximum of 3 options may be added to a fountain.

DIMENSIONS

All dimensions subject to manufacturing variance of plus or minus 1/4" (6 mm)

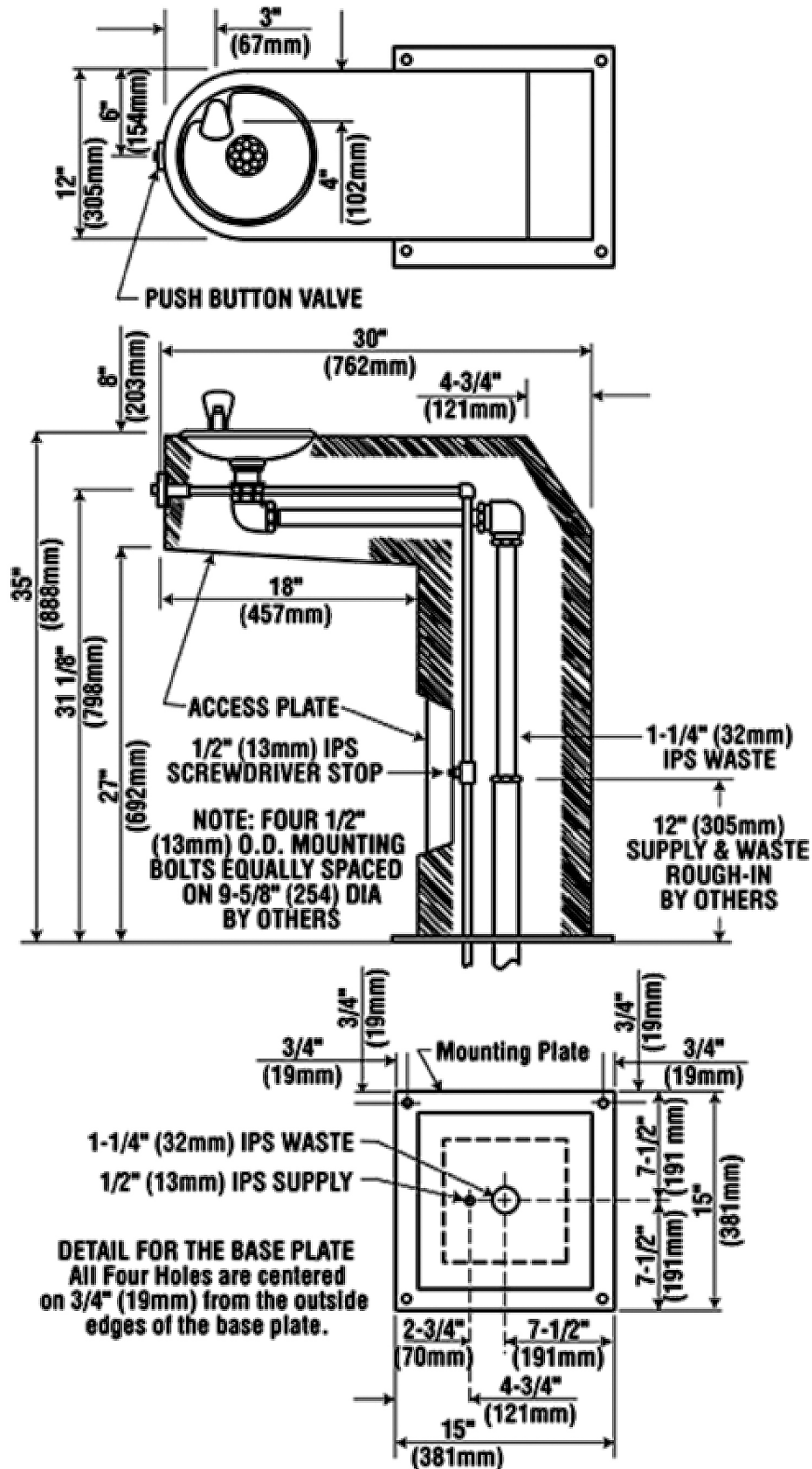
APF-3500-C 35"H x 12"W x 30"L with 15" / square base, Colorama, light etched

APF-3501-C 35"H x 12"W x 30"L with 15" / square base, Colorama, medium etched

APF-3500-Q 35"H x 12"W x 30"L with 15" / square base, Quiet Creek, light etched

APF-3501-Q 35"H x 12"W x 30"L with 15" / square base, Quiet Creek, medium etched

APF-3500



APF-3500-94

