

## 8000 Series HANDWASHING STATION

Stern-Williams' first handwashing station is available as a wall-mounted fixture or an add-on to our drinking fountains or pedestals. Fabricated from steel and finished with a long-lasting powder coat, the Model 8100 is built to stand the test of time and endure weather.

### FEATURES

- Timed faucet button with automatic shut-off
- Manual faucet won't malfunction from sun, overheating, or time
- Extra deep splash guard and bowl
- Powder coat finish available in 11 colors
- Wall mounted fountain available in visible and concealed installation options
- Mounting bracket sold separately
- Single bottom plate for easy maintenance
- Welded smooth with no excessive bolts and clean finish





## ORDERING OPTIONS

Part Number

**8100**

Pedestal mount handwash station



Part Number

**8220**

Wall mount fountain and handwash station with four bolt front mount

Part Number

**8200**

Wall mount handwash station with concealed mount

\*Recommended DMF-610 mounting bracket sold separately

Part Number

**8500**

Pedestal mount fountain with handwash station



Part Number

**8205**

Wall mount handwash station with four-bolt front mount

Part Number

**82**

Additional feature of Stern-Williams drinking fountain and pedestal models

\*see specific product spec sheets for ordering

Part Number

**8215**

Wall mount fountain and handwash station with concealed mount

\*Recommended DMF-610 mounting bracket sold separately

## DIMENSIONS

**8100** 36”H x 10 3/4”W x 14 1/2” Dia. Base/Surface Mount

**8200** 6”H x 20”W x 10 3/4” Dia. Body

**8205** 6”H x 20”W x 10 3/4” Dia. Body

**8215** 15”H x 35”W x 20” Long

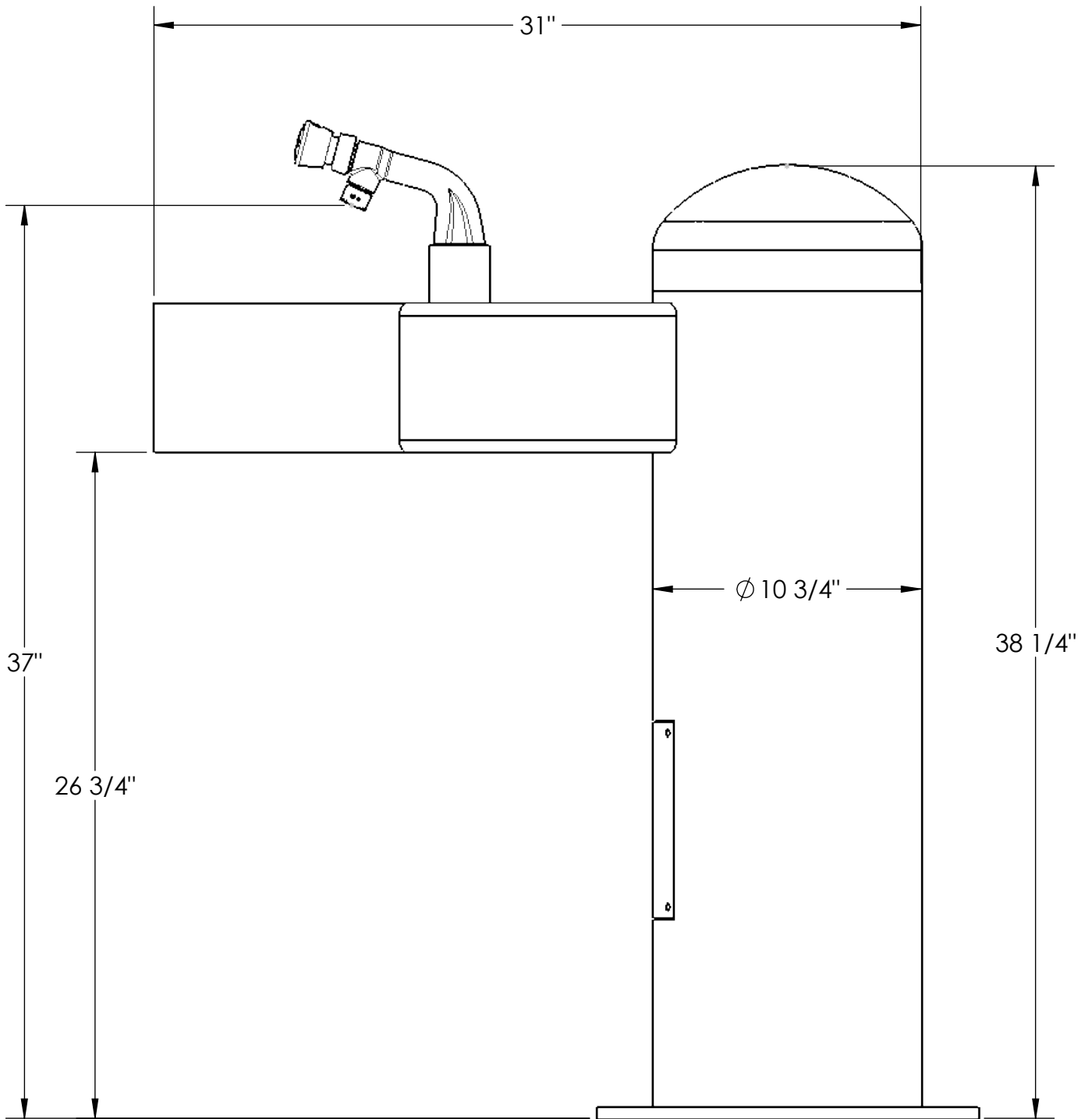
**8220** 15”H x 35”W x 20” Long

**8500** 40”H x 30”W x 14 1/2” Dia. Base/Surface Mount

**82** 6”H x 20”W x 10 3/4” Dia. Body

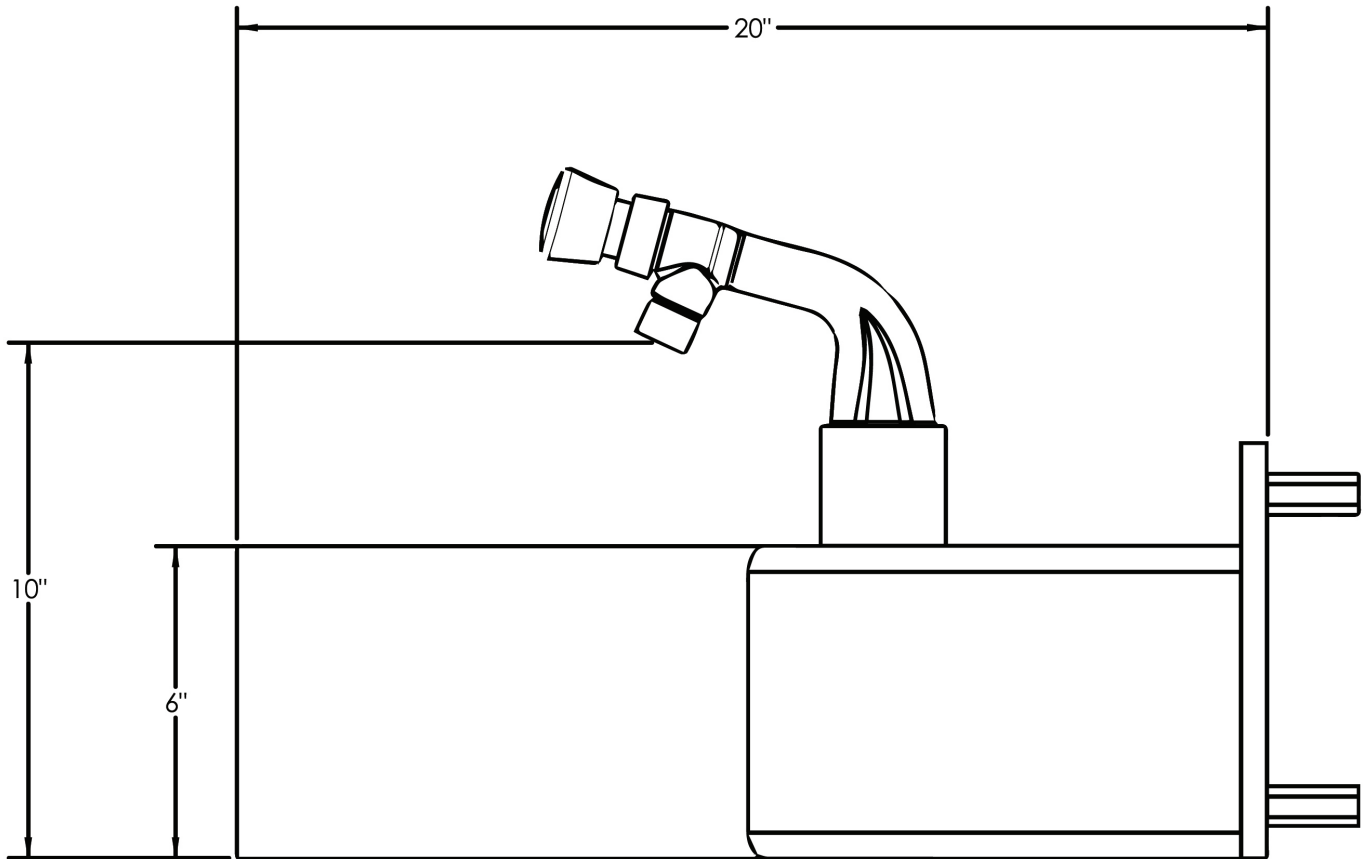


ADA Compliant

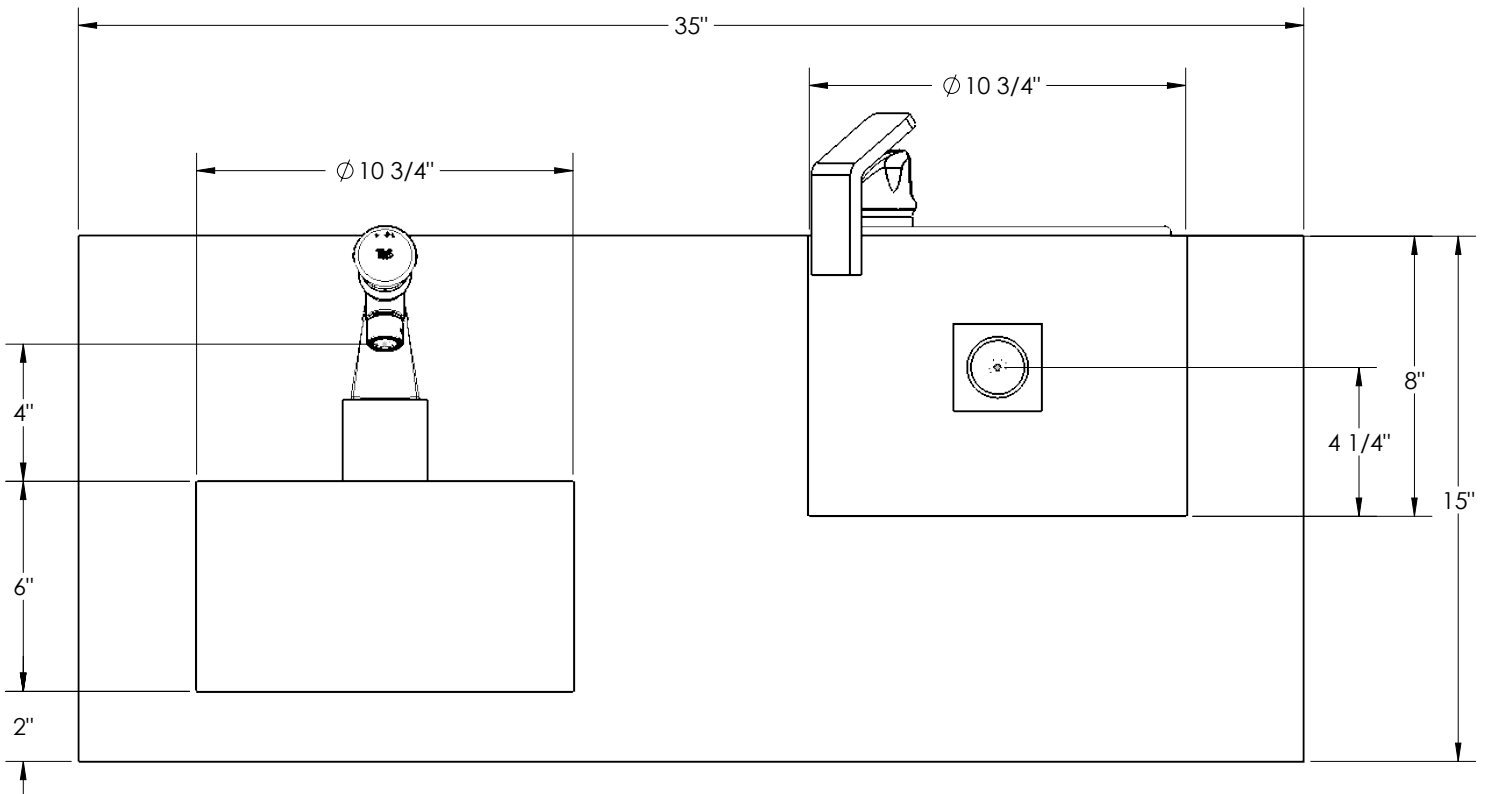


**8200/8205**

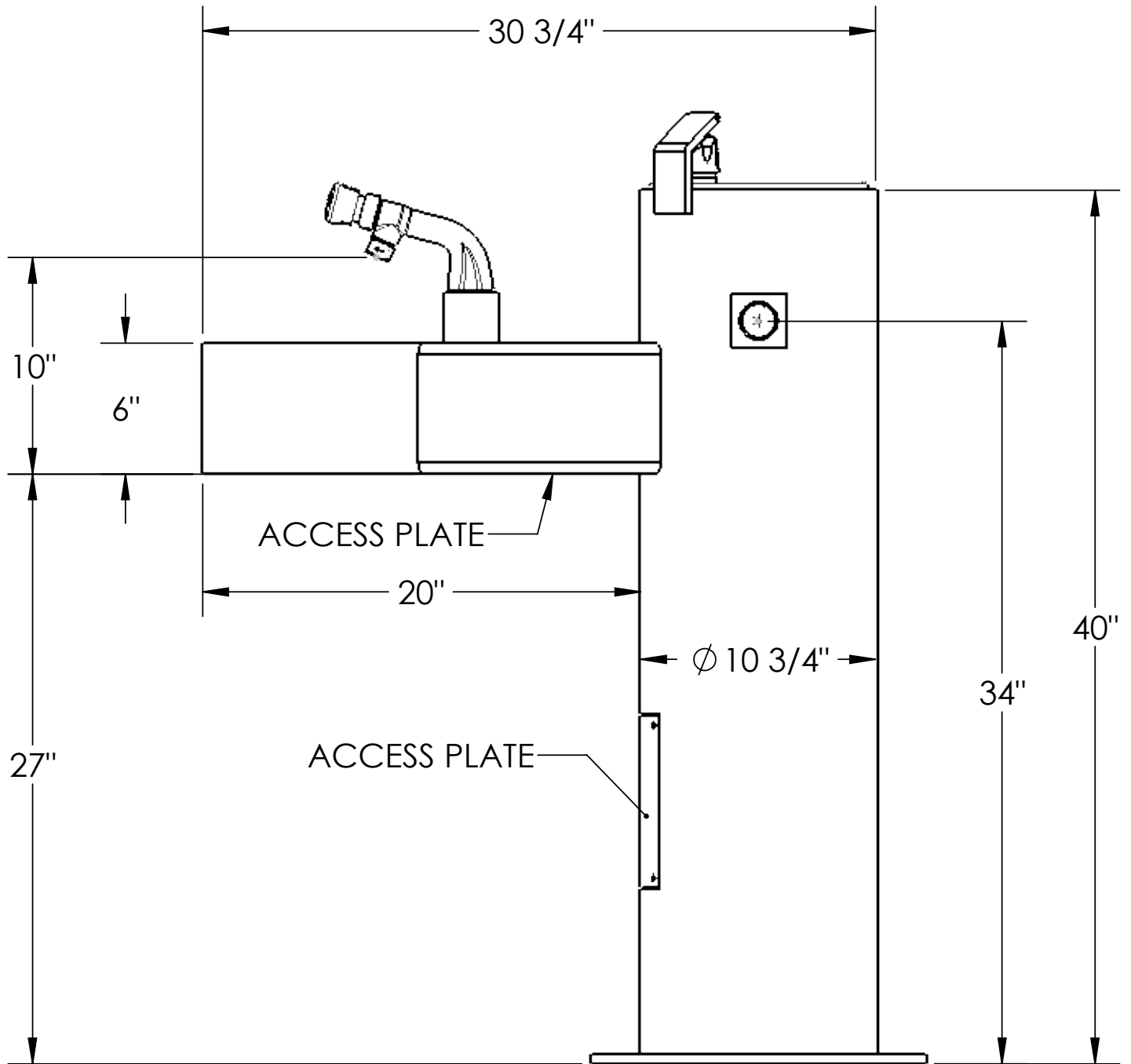
---

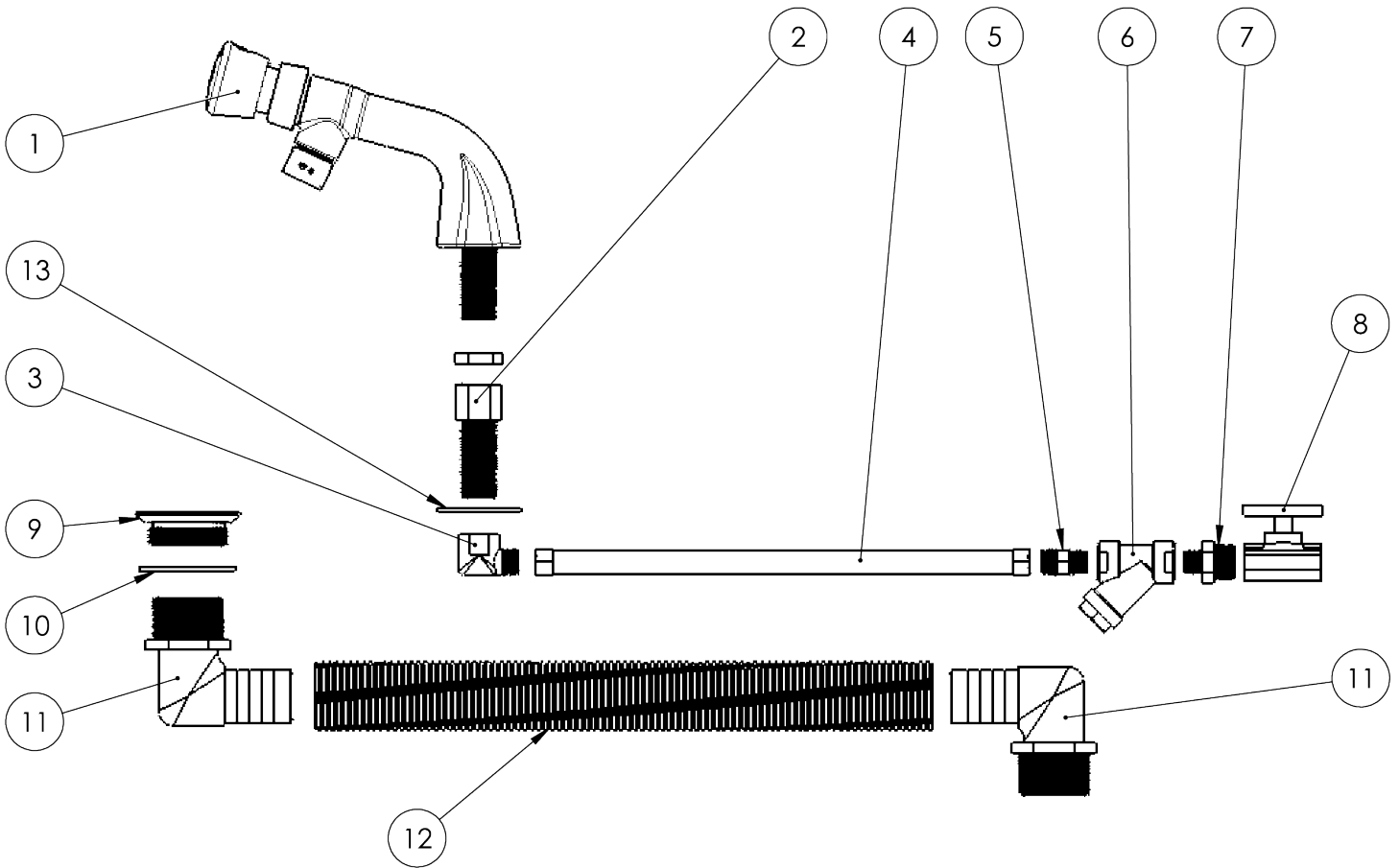


8220/WA-8215



**WA-8500**



**8200 PARTS**


ID	Part Number	Description	ID	Part Number	Description
1	S399-0006	Faucet assembly	9	S231-0260	CP theft-proof drain
2	S310-0011	Hex adapter	10	S336-0001	Bowl gasket
3	S300-0001	Brass elbow	11	S337-0005	Hose barb elbow
4	S231-0196	Braided connector	12	S337-0025	Flex hose
5	S310-0012	Brass adapter	13	S320-0026	Brass washer
6	S337-0041	Y strainer			
7	S310-0001	Brass adapter			
8	S231-0221	Stop slot lockshield			