

MODEL 14, 16, 22, 24, 26, 32

SUSSEX SHOWER FLOORS

Choose square, rectangular or neo-corner models for recessed installations. Square unit is available in three sizes for flexibility in design. Neo-corner provides a roomy shower while conserving floor space. Rectangular model produces the largest area for showering. Shower floor is flanged on all sides for threshold to be built on the job.



(Shown above from top to bottom) Models 14, 24, 32

FEATURES

- Terrazzo is cast in white Portland cement with a composition of black and white quartz, marble and other material chips, then ground smooth, grouted and sealed to resist stains and moisture which produces a compressive strength of 3000 PSI seven days after casting.
- Shower floors shall meet requirements CSA B45.8-18 / IAPMO Z403-2018.
- Terrazzo's natural non-slip surface provides better footing and increased safety.
- Stainless steel drain cast integral with removable stainless steel strainer, and sized for a gasket (QDC4000 included for 2" XHCI, plastic or steel pipe) or a caulked lead connection not less than 1" deep to a 3" pipe.
- Custom configurations available - Drain positions, overall sizes, color options. Call for more information and pricing.

OPTIONAL COMPONENTS

- ☐ **-PB:** Polished Brass Strainer
- ☐ **-VP:** Vandal Proof Drain

ORDERING OPTIONS

Part Number

1



Size (Neo-Corner)

- ☐ **4:** 36x36
- ☐ **6:** 40x40

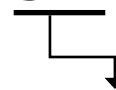
2



Size (Square)

- ☐ **2:** 32x32
- ☐ **4:** 36x36
- ☐ **6:** 40x40

32



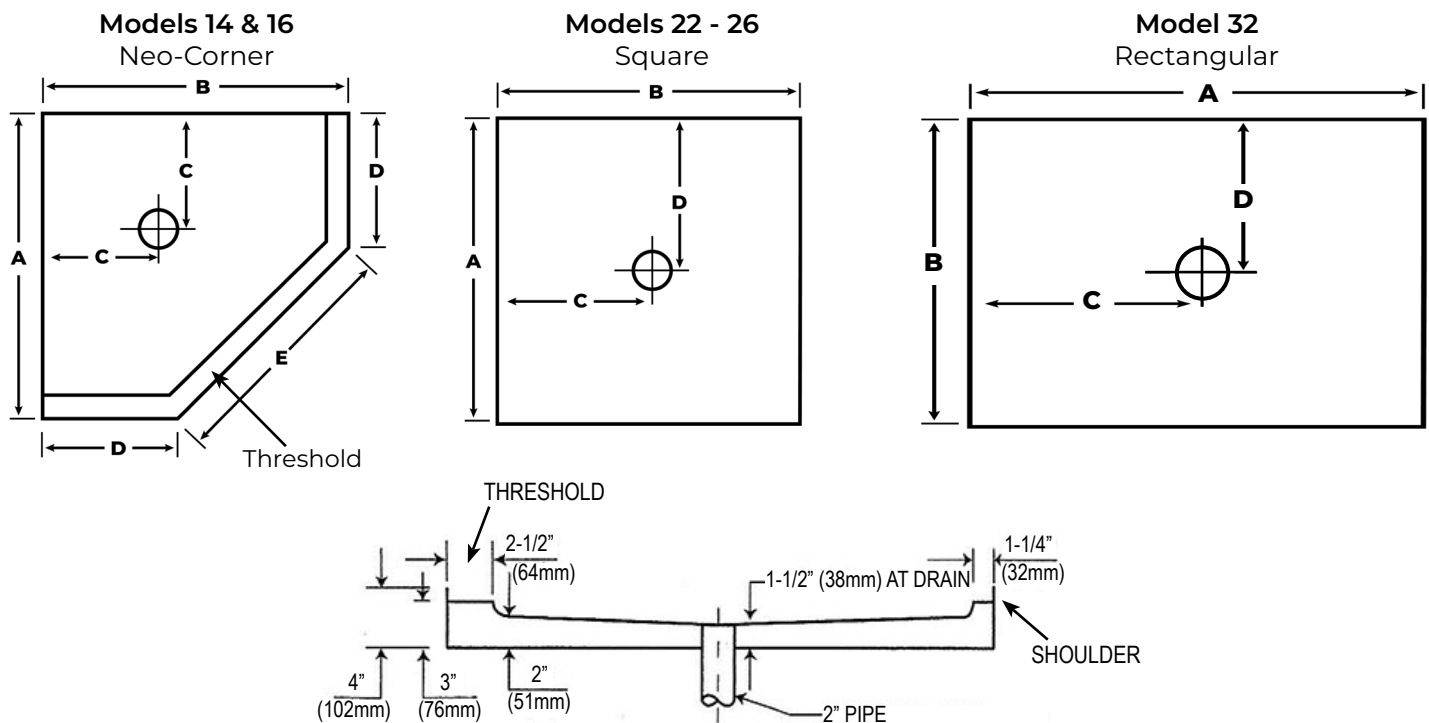
Size (Rectangular)

- ☐ **32:** 48x32

DIMENSIONS

All dimensions subject to manufacturing variance of plus or minus 1/4" (6 mm)

MODEL	FLANGES	SIZE	A	B	C	D	E
14	All Sides	36x36	36	36	12	17	27
16	All Sides	40x40	40	40	12	20	28 ¼
22	All Sides	32x32	32	32	16	16	—
24	All Sides	36x36	36	36	18	18	—
26	All Sides	40x40	40	40	20	20	—
32	All Sides	48x32	48	32	24	16	—



SPECS

Furnish and install neo-corner, square or rectangle Sussex shower floor manufactured by Stern-Williams using black and white chips cast in white Portland cement. The terrazzo material shall have a compressive strength not less than 3000 PSI after full cure. Shower floors shall meet requirements CSA B45.8-18 / IAPMO Z403-2018. All exposed terrazzo surfaces shall be ground smooth, grouted, and factory sealed to resist stains and moisture. Tiling flanges, cast integral on all sides shall be of stainless steel and shall not extend not less than one inch above the shoulder. Shoulder shall be not less than one and one-quarter inch wide. Shower floors include a stainless steel drain body that is cast integral to the shower floor with a removable type stainless steel strainer. Drain shall have inside connection to a 2" pipe sealed with factory provided gasket. Shall be made in the USA.