

MODEL 7300 & 7315 WALL MOUNTED BOTTLE FILLER

A convenient station designed to refill reusable water bottles with filtered water.

ADA Compliant

Model 7300 is a bottle filler only.

Model 7315 is a bottle filler and drinking fountain.



(Shown above) Model 7315

FEATURES

- All steel heavy-duty construction with welded and ground joints for a clean and tidy appearance.
- Stainless Steel (-SS) bodies available for harsh coastal environments.
- Vandal resistant access plates for security and simple future maintenance.
- Vandal resistant bubbler guard unique to Stern Williams Fountains assures years of service
- Brushed aluminum filler spout
- Water pressure range of 30-80 PSI.
- Anchor installed mounting plate comes standard, ground installed mounting plate available as an option for installation assistance (SMP-10).
- Recessed push button requires less than 5 lbs of force and is manufactured from chrome plated brass for reliability and long wear life with a water flow of 0.5 GPM.
- Simple flow adjustment without requiring the dismantling of the fountain
- Fountain Bowl is heavy duty 18 gauge stainless steel with brushed finish and vandal-resistant chrome plated brass strainer. A drain tool is included with each fountain.
- All flow paths are lead-free with reinforced stainless-steel tubing that comply with NSF-61 standards
- In-line mesh screen Y strainer
- ½” Inlet stop valve for simple future maintenance
- 1 ¼” IPS waste pipes included on each fountain
- Standard Woodland Green finish with optional colors available



ORDERING OPTIONS

Part Number

7300-



Optional

- SS:** Stainless Steel Body Upgrade
- 40:** Commemorative Plaque
- FLWMP-1:** Support Carrier with Mounting Plate

7315-



Optional

- SS:** Stainless Steel Body Upgrade
- 40:** Commemorative Plaque
- FLWMP-2:** Dual Support Carrier with Mounting Plate
- RV:** Reverse Heights

*A maximum of 3 options may be added to a fountain.

DIMENSIONS

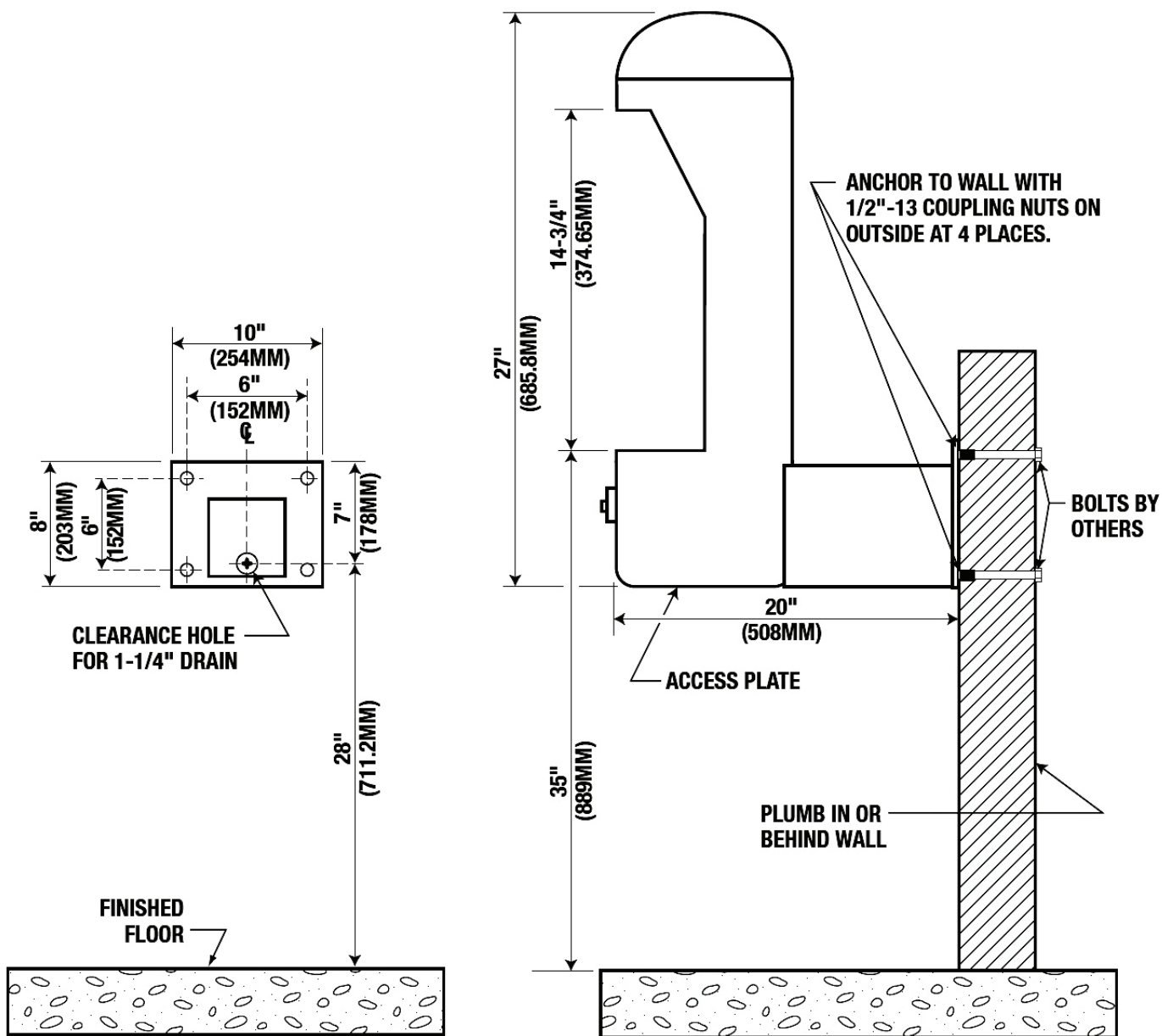
All dimensions subject to manufacturing variance of plus or minus 1/4" (6 mm)

7300 27"H x 20"L

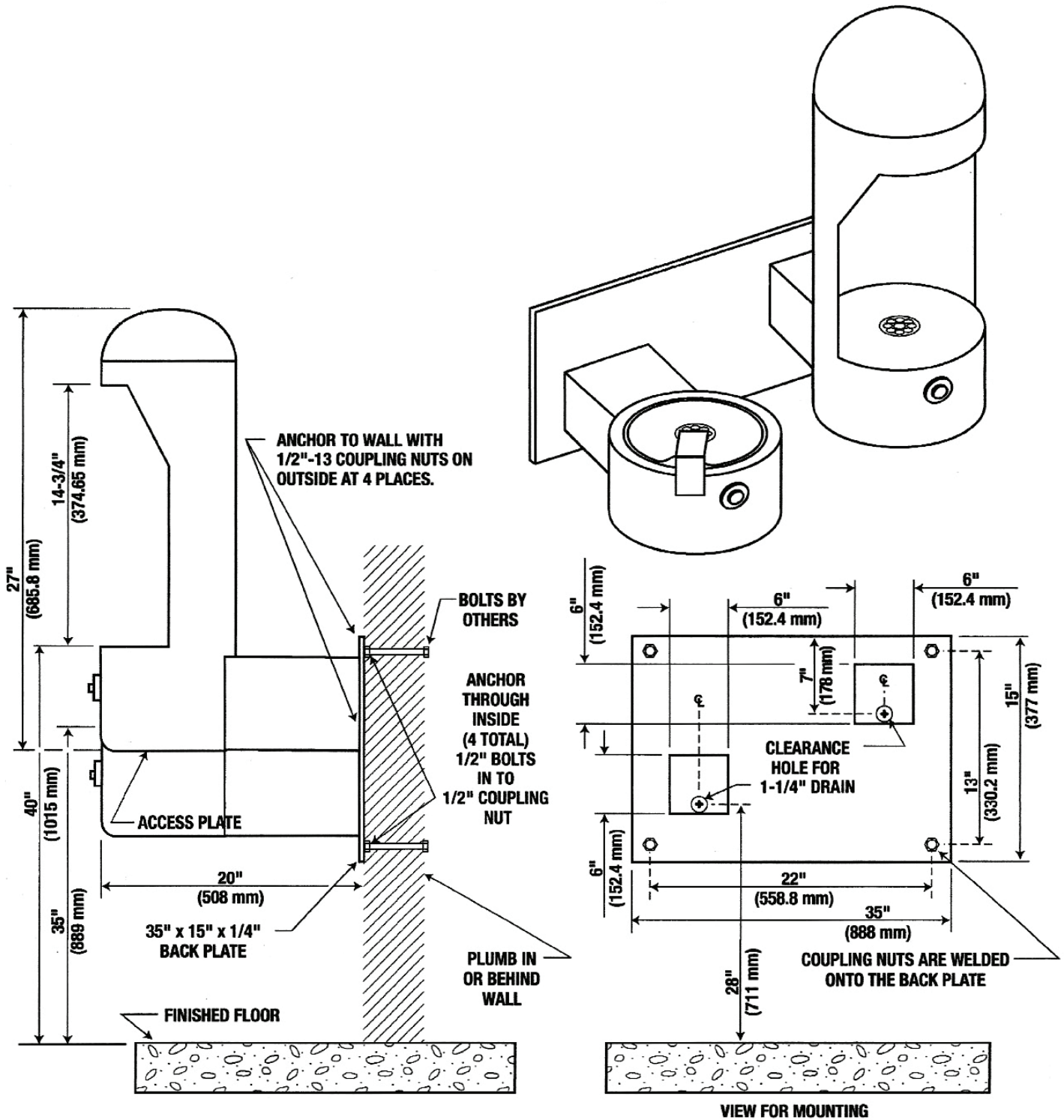
7315 34-1/2"H x 20"L

SPEC

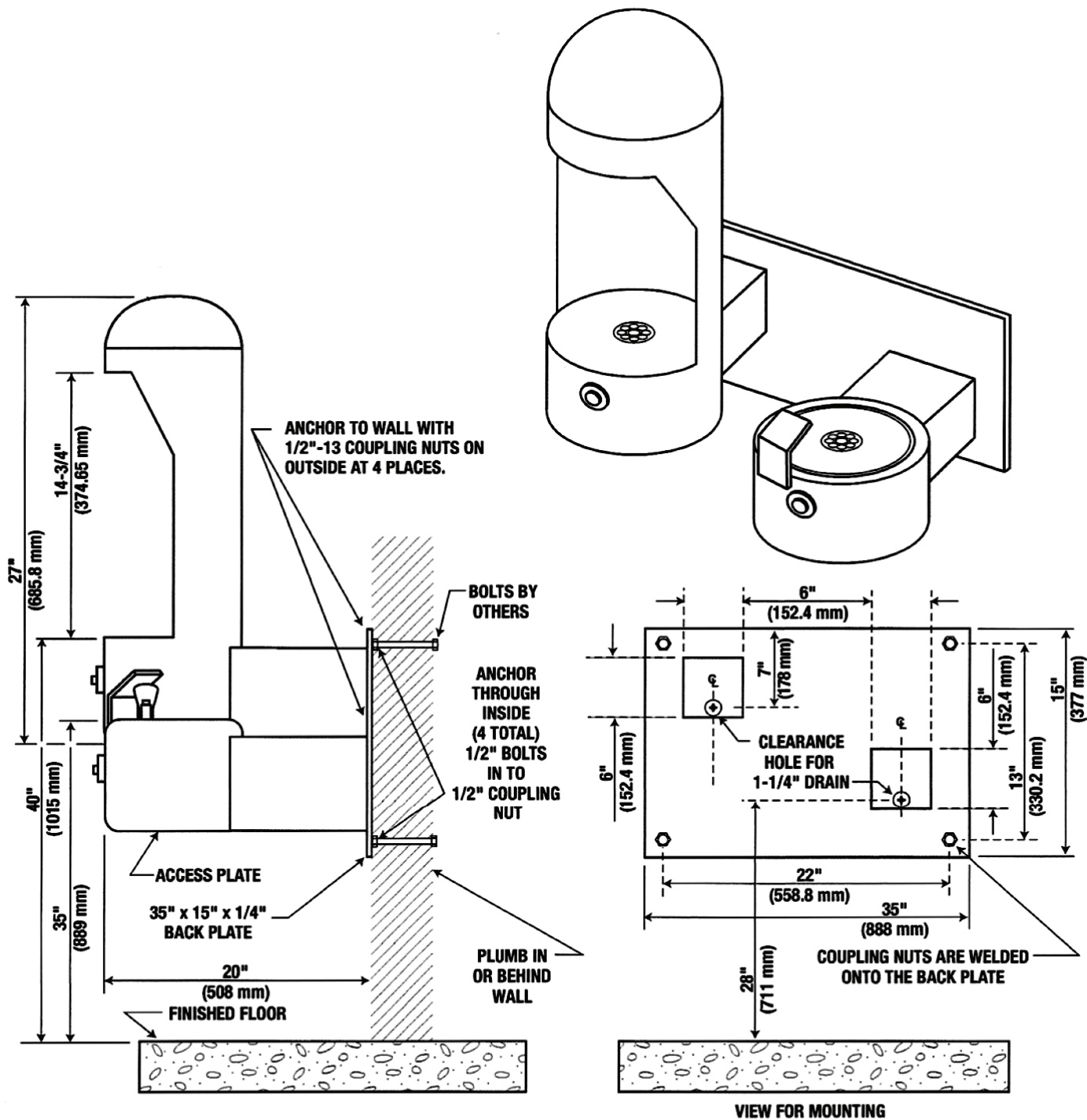
Furnish and install Stern-Williams Water Bottle Filler (specify model # and options). Drinking fountain shall be carbon steel or 304 stainless steel and a powder coated finish. Fountain shall have chrome plated brass bubblers with vandal resistant bubbler guard. Water pressure range shall be 30-80 PSI. Fountains shall provide for simple flow adjustment without requiring dismantling of fountain with a water flow of 0.5 GPM. Joints must be welded and ground smooth. Push buttons shall require less than 5 lbs of force in compliance with ADA code. Fountains shall be installed per manufacturers recommendations and instructions. Drinking fountain flow paths are lead-free with reinforced stainless-steel tubing that comply with NSF-61 standards. Made in the USA.



NOTE: OPTIONAL FLOOR SUPPORT CARRIER FLWMP-1 IS AVAILABLE AND ADVISABLE FOR IN WALL INSTALLATION.



**NOTE: OPTIONAL FLOOR SUPPORT CARRIER
FLWMP-2 IS AVAILABLE AND ADVISABLE
FOR IN WALL INSTALLATION.**



NOTE: OPTIONAL FLOOR SUPPORT CARRIER FLWMP-2 IS AVAILABLE AND ADVISABLE FOR IN WALL INSTALLATION.