

MODEL 7320 DUAL DRINKING AND BOTTLE FILLER STATION



Designed to be a convenient station to refill reusable water bottles with filtered water. Combination wall mounted filtered water bottle filler and handicap accessible drinking fountains.



FEATURES

- All steel heavy-duty construction with welded and ground joints for a clean and tidy appearance.
- Stainless Steel (-SS) bodies available for harsh coastal environments.
- Vandal resistant access plates for security and simple future maintenance.
- Vandal resistant bubbler guard unique to Stern Williams Fountains assures years of service
- Brushed aluminum filler spout
- Water pressure range of 30-80 PSI.
- Anchor installed mounting plate comes standard, ground installed mounting plate available as an option for installation assistance (SMP-10).
- Recessed push button requires less than 5 lbs of force and is manufactured from chrome plated brass for reliability and long wear life with a water flow of 0.5 GPM.
- Simple flow adjustment without requiring the dismantling of the fountain
- Fountain Bowl is heavy duty 18 gauge stainless steel with brushed finish and vandal-resistant chrome plated brass strainer. A drain tool is included with each fountain.
- All flow paths are lead-free with reinforced stainless-steel tubing that comply with NSF-61 standards
- In-line mesh screen Y strainer
- ½” Inlet stop valve for simple future maintenance
- 1 ¼” IPS waste pipes included on each fountain
- Standard Woodland Green finish with optional colors available





ORDERING OPTIONS

Part Number

7320 -



Optional

- SS:** Stainless steel finish
- RV:** Reverse heights
- 40:** Commemorative Plaque

DIMENSIONS

All dimensions subject to manufacturing variance of plus or minus 1/4" (6 mm)

7320 309"H x 20 3/4"L

SPEC

Furnish and install Stern-Williams Dual Drinking Fountain and Water Bottle Filler Station (specify model # and options). Drinking fountain shall be carbon steel or 304 stainless steel and a powder coated finish. Fountain shall have chrome plated brass bubblers with vandal resistant bubbler guard. Water pressure range shall be 30-80 PSI. Fountains shall provide for simple flow adjustment without requiring dismantling of fountain with a water flow of 0.5 GPM. Joints must be welded and ground smooth. Push buttons shall require less than 5 lbs of force in compliance with ADA code. Fountains shall be installed per manufacturers recommendations and instructions. Drinking fountain flow paths are lead-free with reinforced stainless-steel tubing that comply with NSF-61 standards. Made in the USA.

ORDERING OPTIONS

Part Number

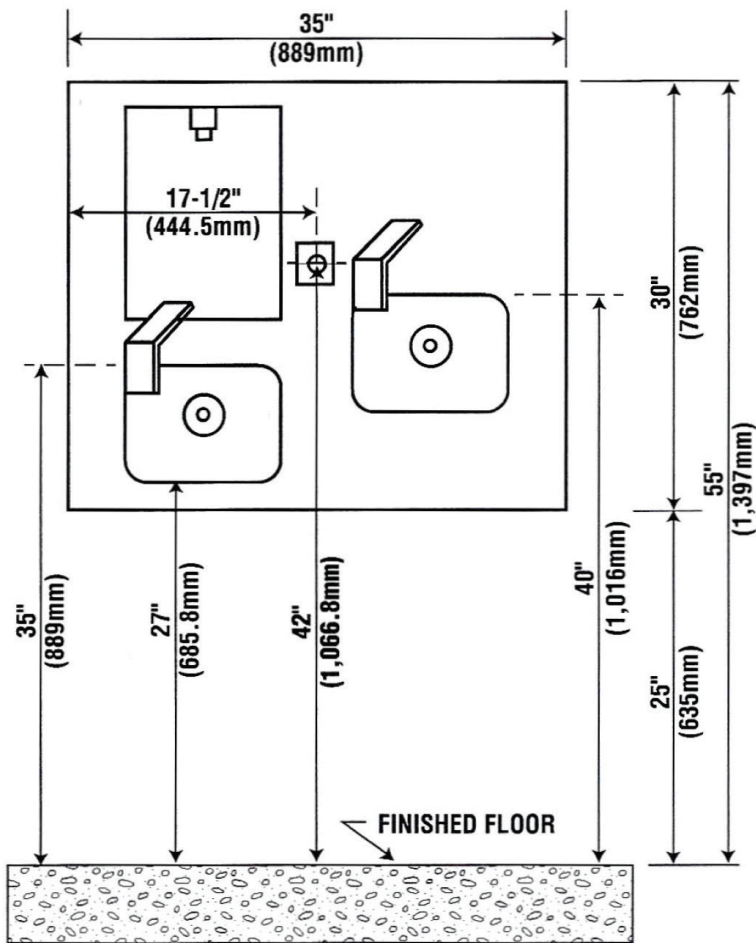
7320 -



Optional

- SS:** Stainless steel finish
- RV:** Reverse heights

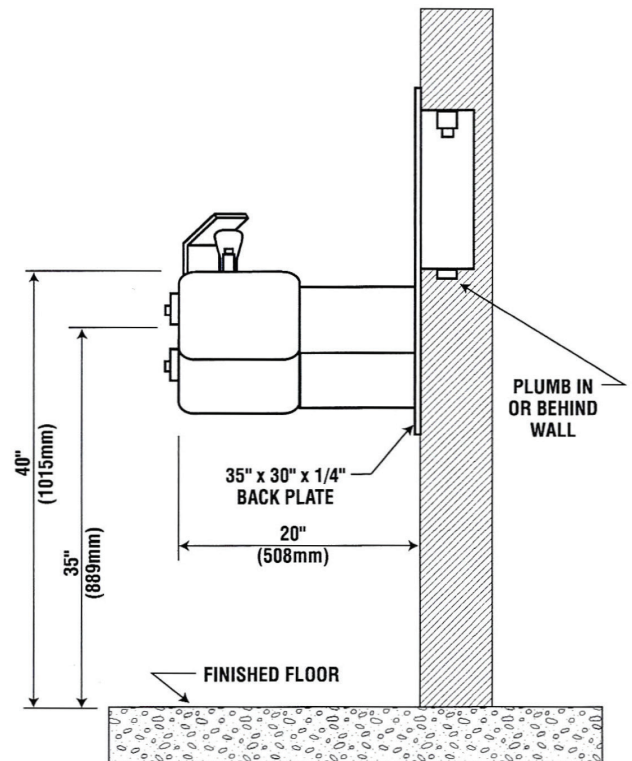
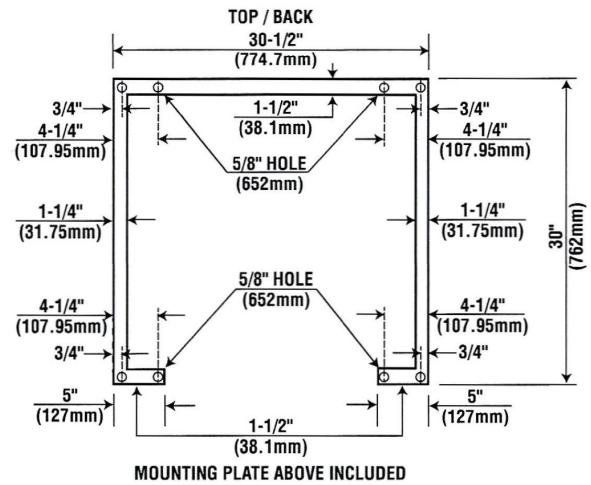
7320



DIMENSIONS

All dimensions subject to manufacturing variance of plus or minus 1/4" (6 mm)

7320 309"H x 20 3/4"L



7320-RV

