

MODEL 4700 BARRIER-FREE DRINKING FOUNTAINS

The Model 4700 is both an economic and high quality choice. This fountain is great for playgrounds or any high traffic area where cost is a consideration. Model 4700 is ADA Compliant.

FEATURES

- All steel heavy-duty construction with welded and ground joints for a clean and tidy appearance
- Stainless Steel (-SS) bodies available for harsh coastal environments
- Vandal resistant access plates for security and simple future maintenance
- Vandal resistant bubbler guard unique to Stern Williams Fountains assures years of service.
- Water pressure range of 30-80 PSI.
- Anchor installed mounting plate comes standard, ground installed mounting plate available as an option for installation assistance (SMP-6).
- Recessed push button require less than 5 lbs of force and is manufactured from chrome plated brass for reliability and long wear life with a water flow of 0.5 GPM.
- Simple flow adjustment without requiring the dismantling of the fountain
- Fountain Bowl is heavy duty 18 gauge stainless steel with brushed finish and vandal-resistant chrome plated brass strainer. A drain tool is included with each fountain.
- All flow paths are lead-free with reinforced stainless-steel tubing that complies with NSF/ANSI/CAN 61: Q≤1 (AB100) standards.
- Stainless steel supply fittings connected to reinforced tubing.
- In-line mesh screen Y strainer.
- ½” Inlet stop valve for simple future maintenance.
- 1-1/4” IPS waste pipes included with every fountain.
- Standard Woodland Green Finish with Optional colors.



ORDERING OPTIONS

Part Number

4700-



Optional

- SS:** Stainless steel body upgrade
- 31:** Chrome Plated Jug Filler
- 32:** RCP Hose bibb with VB
- 32-LK:** RCP Hose bibb with VB and Key
- 32-SC:** Self Closing Hose bibb with VB
- 38:** Shutdown/Drain Valve
- 40:** Commemorative Plaque
- 84:** Water Filter
- 85:** Ground Valve Box with Lid
- 95:** Sand Trap
- 96:** Sand Strainer Plate
- SMP-6:** Surface Mounting Plate

4700-FP-



Optional

- SS:** Stainless steel body upgrade
- 38:** Shutdown/Drain Valve
- 40:** Commemorative Plaque
- 85:** Valve box (Recommended for FP)
- 95:** Sand Trap
- 96:** Sand Strainer Plate
- SMP-6:** Surface Mounting Plate

4700-FPS-



Optional

- SS:** Stainless steel body upgrade
- 38:** Shutdown/Drain Valve
- 40:** Commemorative Plaque
- 85:** Valve box (Recommended for FP)
- 95:** Sand Trap
- 96:** Sand Strainer Plate
- SMP-6:** Surface Mounting Plate

*A maximum of 3 options may be added to a fountain.

DIMENSIONS

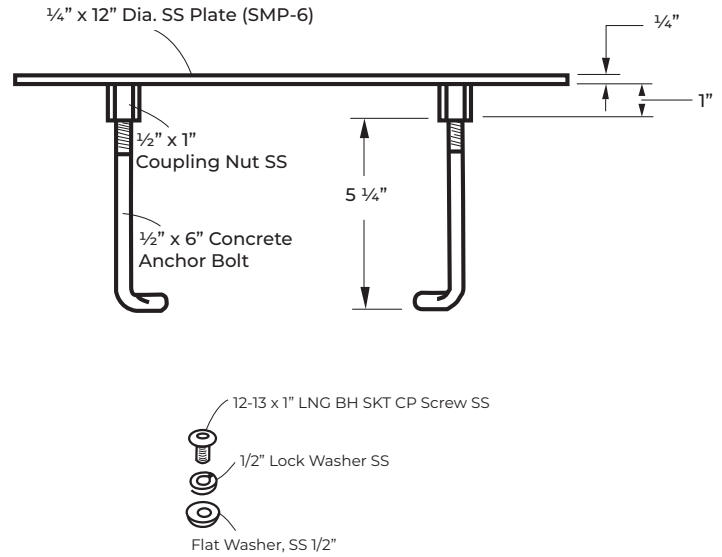
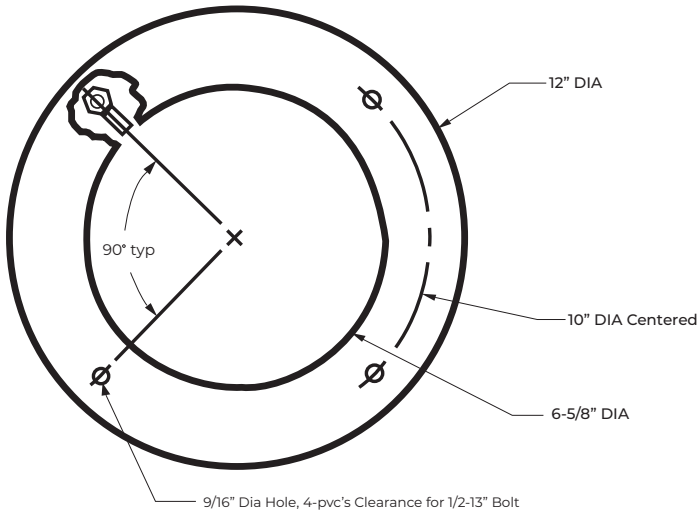
All dimensions subject to manufacturing variance of plus or minus 1/4" (6 mm)

4700 34-3/4"H x 36"W with 12" Dia. Base / Single with surface mount

SPEC

Furnish and install Stern-Williams Barrier-Free Drinking Fountain (specify model # and options). Drinking fountains shall be carbon steel or 304 stainless steel and a powder coated finish. Fountain shall have chrome plated brass bubblers with vandal resistant bubbler guard. Water pressure range shall be 30-80 PSI. Fountains shall provide for simple flow adjustment without requiring dismantling of fountain with a water flow of 0.5 GPM. Welded anchor base shall be 1/2" thick. Joints must be welded and ground smooth. Push buttons shall require less than 5 lbs of force in compliance with ADA code. Fountains shall be installed per manufacturers recommendations and instructions. Drinking fountain flow paths are lead-free with reinforced stainless-steel tubing that complies with NSF/ANSI/CAN 61: Q≤1 (AB100) standards. Made in the USA.

SMP-6



4700

