

## MODEL RPS-6000, RPS-6200, RPS-6400, RPS-6800, RPS-6850

### AGGREGATE SHOWER TOWER & FOOT WASH

Outdoor showers designed to comply to the roughest conditions.  
Mounting is Surface type with mounting plate welded to pedestal.

Metering valve is standard.

RPS-6000 comes with a foot wash

RPS-6200 comes with a body and foot wash

RPS-6400 comes with a dual body and foot wash

RPS-6800 comes with a wheelchair accessible shower and foot wash

RPS-6850 comes with a triple shower

## FEATURES

- Vandal resistant access plates for security and simple future maintenance.
- Anchor installed mounting plate comes standard, optional ground installed mounting plate (SMP-12R) available as an option for installation assistance.
- Push button valve, centered on vandal resistant stainless steel access plate
- Stainless steel supply fittings connected to reinforced tubing
- Water pressure range of 30-80 PSI.
- Simple flow adjustment without dismantling of the fountain with a water flow of 2.5 GPM.
- Timer controlled shower heads are made from heavy duty materials with a preset running time of 60 seconds that can be adjusted from 0 to 60 seconds.
- Shower head spray pattern is adjustable from stream to mist.
- All flow paths are lead-free with reinforced stainless-steel tubing that complies with NSF/ANSI/CAN 61: Q≤1 (AB100) standards.
- ½" inlet stop valve for simple future maintenance.



(Shown above) RPS-6200



(00-Q) Quiet Creek  
Light Etched



(00-C) Colorama  
Light Etched



(01-Q) Quiet Creek  
Medium Etched



(01-C) Colorama  
Medium Etched

## ORDERING OPTIONS

Part Number

### RPS-6000-

**Optional**

- 32:** RCP Hose Bibb with VB
- 32-LK:** RCP Hose Bibb with VB and Key
- 32-SC:** Self Closing Hose Bibb with VB
- 38:** Shutdown/Drain Valve
- 40:** Commemorative Plaque
- 85:** Valve Box
- SMP-12:** Surface Mounting Plate

### RPS-6200-

**Optional**

- 32:** RCP Hose Bibb with VB
- 32-LK:** RCP Hose Bibb with VB and Key
- 32-SC:** Self Closing Hose Bibb with VB
- 38:** Shutdown/Drain Valve
- 40:** Commemorative Plaque
- 85:** Valve Box
- SMP-12:** Surface Mounting Plate

### RPS-6400-

**Optional**

- 32:** RCP Hose Bibb with VB
- 32-LK:** RCP Hose Bibb with VB and Key
- 32-SC:** Self Closing Hose Bibb with VB
- 38:** Shutdown/Drain Valve
- 40:** Commemorative Plaque
- 85:** Valve Box
- SMP-12:** Surface Mounting Plate

### RPS-6800-

**Optional**

- 32:** RCP Hose Bibb with VB
- 32-LK:** RCP Hose Bibb with VB and Key
- 32-SC:** Self Closing Hose Bibb with VB
- 38:** Shutdown/Drain Valve
- 40:** Commemorative Plaque
- 85:** Valve Box
- SMP-12:** Surface Mounting Plate

### RPS-6850-

**Optional**

- 32:** RCP Hose Bibb with VB
- 32-LK:** RCP Hose Bibb with VB and Key
- 32-SC:** Self Closing Hose Bibb with VB
- 38:** Shutdown/Drain Valve
- 40:** Commemorative Plaque
- 85:** Valve Box
- SMP-12:** Surface Mounting Plate

## DIMENSIONS

All dimensions subject to manufacturing variance of plus or minus 1/4" (6 mm)

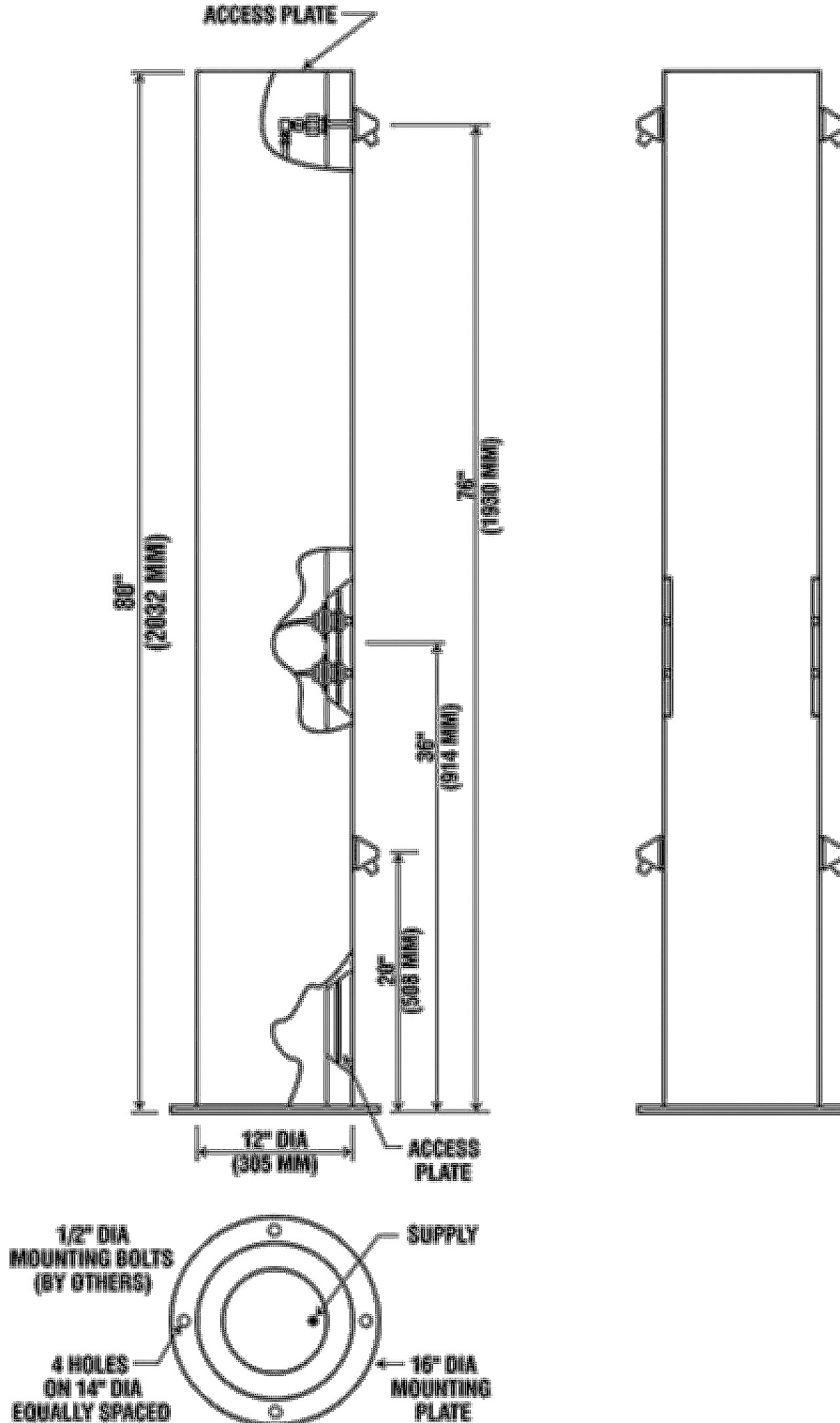
**RPS-6200** 80"H x 12"Dia – Body and Foot Wash

**RPS-6400** 80"H x 12"Dia – Dual Body and Foot Wash

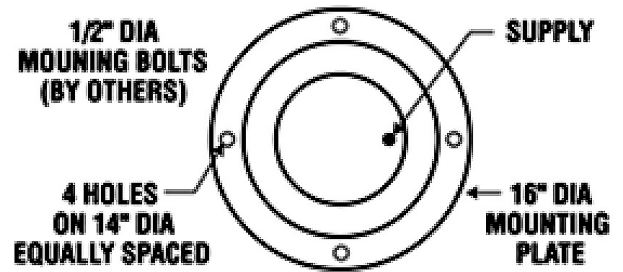
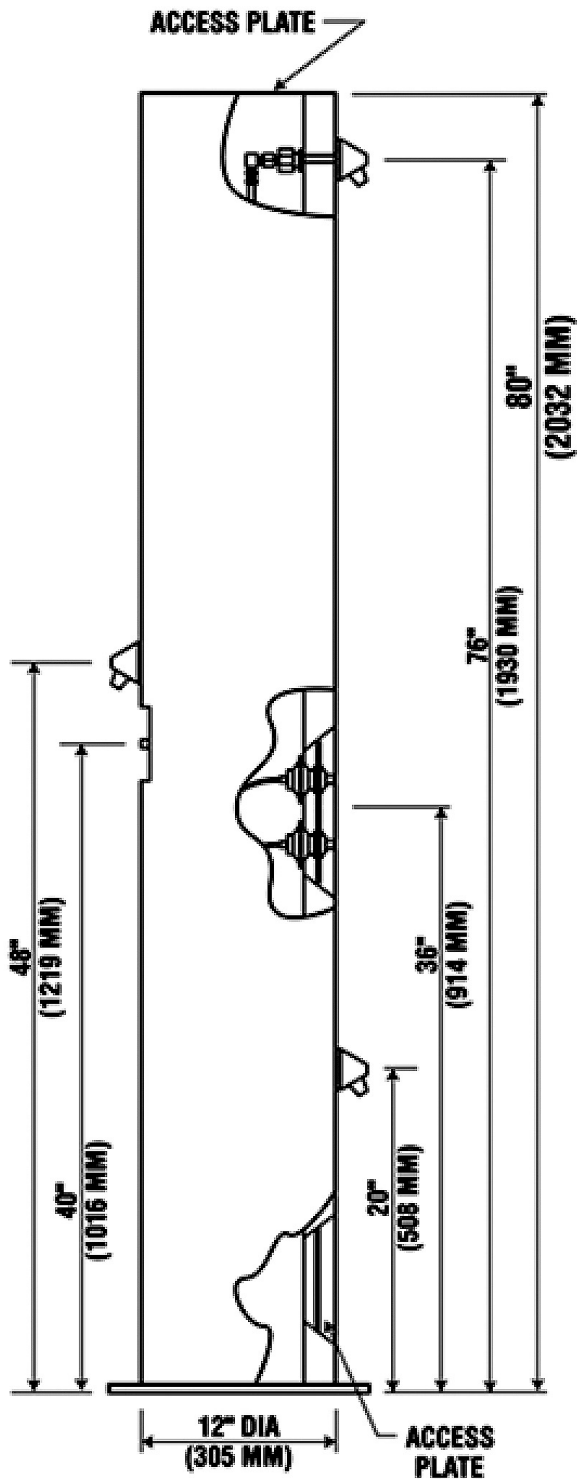
**RPS-6800** 80"H x 12"Dia – Wheelchair accessible Shower and Foot Wash

**RPS-6850** 80"H x 12"Dia – Triple Shower

**RPS-6200, RPS-6400**



**RPS-6800**



**RPS-6850**

