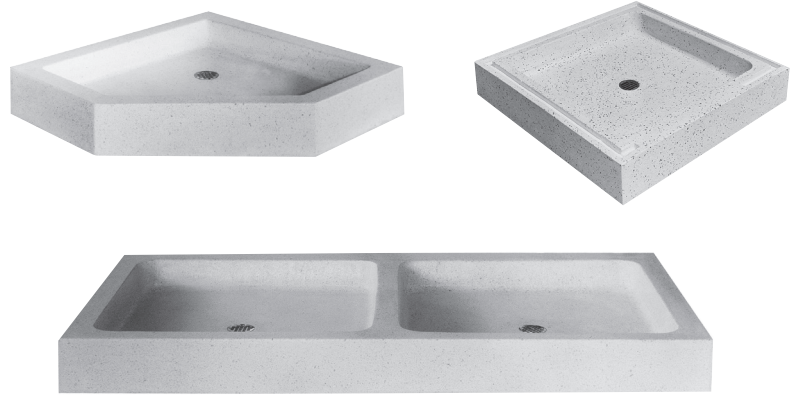


34, 34.5, 36-D, 36-DD, 34-NC SERPENTINE SHOWER FLOORS

The Serpentine Floor Models are institutional shower floors and are available in square, rectangular, and corner models.

Tiling flanges and/or rabbet or off-the-floor roughing. Specify plain shoulders for installation flush against room wall.

Model 36-DD features a double drain
Model 34-NC is a neo-corner



(Shown from top to bottom) Model 34-NC, Model-34 Model 36-DD

FEATURES

- Terrazzo is cast in white Portland cement with a composition of black and white quartz, marble and other material chips, then ground smooth, grouted and sealed to resist stains and moisture which produces a compressive strength of 3000 PSI seven days after casting.
- Terrazzo's natural non-slip surface provides better footing and increased safety.
- Stainless steel drain cast integral with removable stainless steel strainer (S423-0105), and sized for a gasket (QDC4000 included for 2" XHCI, plastic or steel pipe) or a caulked lead connection not less than 1" deep to a 3" pipe.
- Our -R models include 1" wide x 1" deep rabbets centered on threshold (specify configuration).
- Custom configurations available - Drain positions, overall sizes, color options. Call for more information and pricing.

OPTIONAL COMPONENTS

- QIC2000:** 2" Drain Gasket for a 2" Pipe - No Hub
- TC-2:** 2" Drain Gasket for a 2" Pipe - Brass drains only

ORDERING OPTIONS

Part Number

3



Size

- 4:** 36x36
- 4.5:** 48x36
- 4-NC:** 36x36

36



Size

- D:** 36x72
- DD:** 36x72

DIMENSIONS

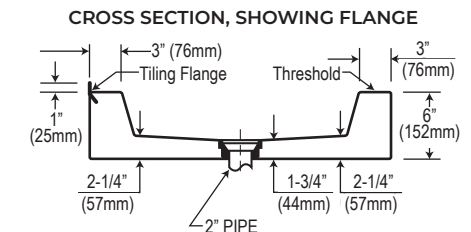
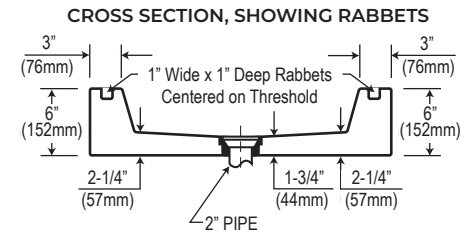
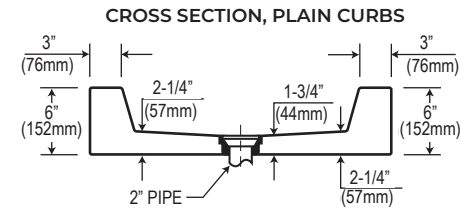
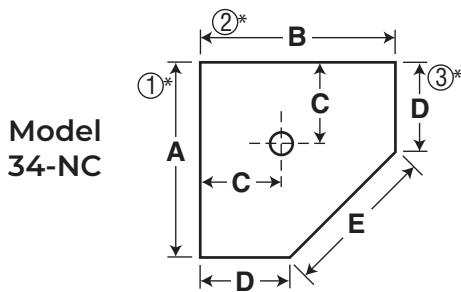
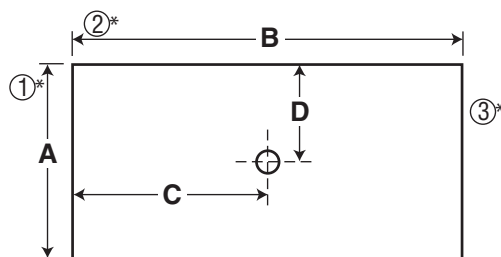
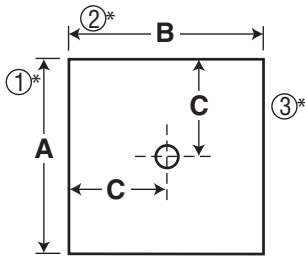
All dimensions subject to manufacturing variance of plus or minus 1/4" (6 mm)

Specify: Plain curbs

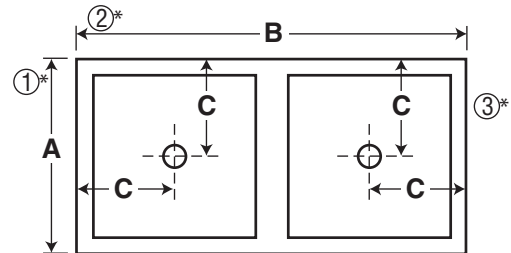
Add suffix for: Flanges (-F: 1, 2 or 3), or Rabbets (-R: specify configuration)

| MODEL | SIZE | A | B | C | D | E |
|-------|-------|----|----|----|----|--------|
| 34 | 36x36 | 36 | 36 | 18 | — | — |
| 34.5 | 48x36 | 36 | 48 | 24 | 18 | — |
| 36-D | 36x72 | 36 | 72 | 18 | — | |
| 34-NC | 36x36 | 36 | 36 | 12 | 18 | 25-3/8 |
| 36-DD | 36x72 | 36 | 72 | 18 | — | — |

Models 34, 34.5, 36-D



Model 36-DD



SPECS

Furnish and install neo-corner, square, rectangle or double drain Serpentine shower floors with threshold manufactured by Stern-Williams using black and white chips cast in white Portland cement. The terrazzo material shall have a compressive strength not less than 3000 PSI after full cure. All exposed terrazzo surfaces shall be ground smooth, grouted, and factory sealed to resist stains and moisture. Tiling flanges, cast integral shall be of stainless steel and shall not extend not less than one inch above the shoulder. Shoulder shall be not less than three inches wide. Shower floors include a stainless steel drain body that is cast integral to the shower floor with a removable type stainless steel strainer. Drain shall have inside connection to a 2" pipe sealed with factory provided gasket. Shall be made in the USA.