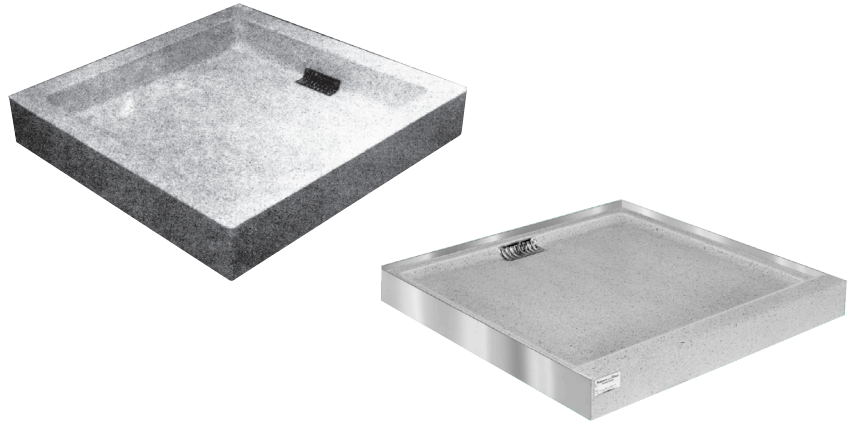


24-BO, 34-BO, 52-BO, 54-BO BACK OUTLET SHOWER FLOOR

Back Outlet (-BO Models) Shower Floors available for off-the-floor roughing. When structural consideration demands, this floor allows drain to be put directly into pipe chase. Provides freedom of design.



(Shown from top to bottom) Model 34-BO, Model 54-BO

FEATURES

- Terrazzo is cast in white Portland cement with a composition of black and white quartz, marble and other material chips, then ground smooth, grouted and sealed to resist stains and moisture which produces a compressive strength of 3000 PSI seven days after casting.
- Back outlet and side outlet drains are available on other Sussex, Serpentine and Trieste shower floors.
- Terrazzo's natural non-slip surface provides better footing and increased safety.
- 2" F.I.P.S. brass drain is centered on the back dimension, and has a removable chrome-plated brass strainer.
- Custom configurations available - Drain positions, overall sizes, color options. Call for more information and pricing.

ORDERING OPTIONS

Part Number



Size

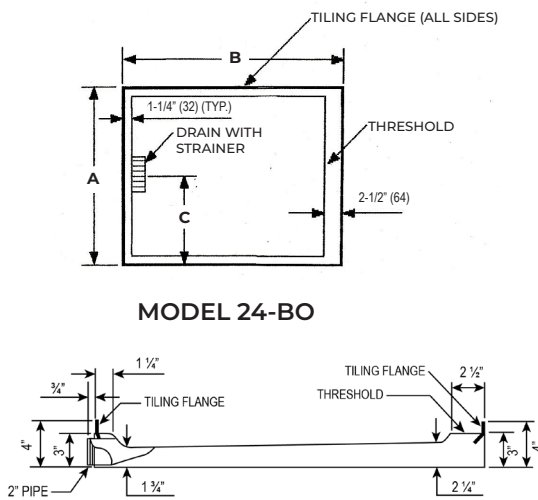
- 24-BO:** 36x36 (all sides flanged)
- 34-BO:** 36x36 (plain, flanged and/or rabbets)
- 52-BO:** 32x32 (threshold on one side)
- 54-BO:** 36x36 (threshold on one side)

DIMENSIONS

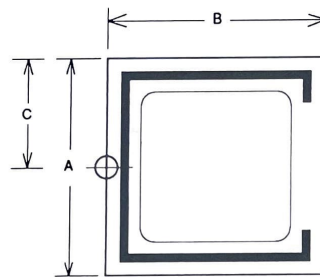
All dimensions subject to manufacturing variance of plus or minus 1/4" (6 mm)

*Drain is centered on back dimension, 2" FIPS outlet

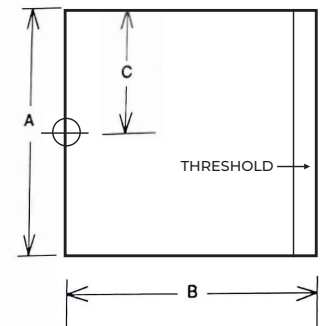
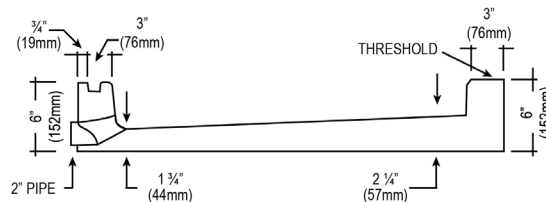
MODEL	FLANGES	THRESHOLD	SIZE	A	B	C
SUSSEX BACK OUTLET - All sides flanged						
24-BO*	4 sides	—	36x36	36	36	18
SERPENTINE BACK OUTLET - Plain Curbs, flanged and/or rabbet						
34-BO*	—	—	36x36	36	36	18
TRIESTE BACK OUTLET - With threshold on one side						
52-BO*	3 sides	1 side	32x32	32	32	16
54-BO*	3 sides	1 side	36x36	36	36	18



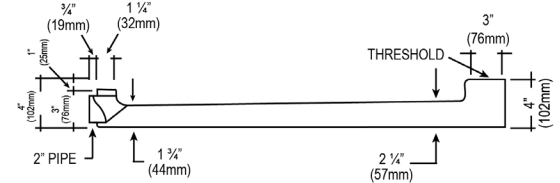
MODEL 24-BO



MODEL 34-BO



MODELS 52-BO & 54-BO



SPECS

Furnish and install Back Outlet shower floors manufactured by Stern-Williams using black and white chips cast in white Portland cement. The terrazzo material shall have a compressive strength not less than 3000 PSI after full cure. All exposed terrazzo surfaces shall be ground smooth, grouted, and factory sealed to resist stains and moisture. Tiling flange, cast integral shall be of stainless steel and shall not extend not less than one inch above the shoulder. Shower floors include a brass drain body that is cast integral and shall provide for a two inch female I.P.S. outlet. Removable type strainer plate shall be made of C.P. brass. Shall be made in the USA.